

# *Hustler Two Bag Catcher Owner's Manual*





# TABLE OF CONTENTS

1. General Information.....Sect. 1

2. Safety Precautions.....Sect. 2

3. Assembly Instructions.....Sect. 3

4. Operation.....Sect. 4

5. Maintenance.....Sect. 5

6. Storage .....Sect.6

7. Parts List .....Sect. 7

8. Index.....Sect. 8



# GENERAL INFORMATION

**This manual applies to the following equipment:**

**Hustler Two Bag Catcher, number 928408**  
**Hustler Mini Z 36/42, FasTrak Super Duty 36/42**  
**Adapter Kit, number 108629**  
**FasTrak 48" Adapter Kit, number 108630**  
**FasTrak 54" Adapter Kit, number 108631**  
**FasTrak 44" Adapter Kit, number 109516**  
**FasTrak 52" Adapter Kit, number 109517**  
**FasTrak Super Duty 60" Adapter Kit,**  
**number 110159**

## To the new owner

The purpose of this manual is to assist owners and operators in maintaining and operating the Hustler Two Bag Catcher. Please read it carefully; information and instructions furnished can help you achieve years of dependable performance.

## Using this manual

General operation, adjustment and maintenance guidance is outlined for both the experienced and novice Hustler user. Operating conditions vary considerably and cannot all be addressed individually. Through experience, however, operators should find no difficulty in developing good operating skills suitable to most conditions.

Directions used in this manual, for example RIGHT or LEFT, refer to directions when seated on tractor facing forward, unless otherwise stated.

Photographs and illustrations used were current at the time of printing, but subsequent production changes may cause your machine to vary slightly in detail. Hustler Turf Equipment reserves the right to redesign and change the machine as deemed necessary, without notification. If a change has been made to your machine which is not reflected in this owner's manual, or the parts manual, see your Hustler dealer for current information and parts.

## Warranty registration

The Delivery and Warranty Registration form must be completed and signed to validate your warranty protection. As the new equipment owner, you are expected to see that the card is completed and forwarded to Hustler Turf Equipment at time of delivery.

Be sure to register the tractor plus each attachment that displays a model and serial identification number plate with Hustler Turf Equipment.

**IMPORTANT:** Any unauthorized modification, alteration, or use of non-approved attachments voids the warranty and releases Hustler Turf Equipment from any liability arising from subsequent use of this equipment.

## Parts and service

Use original Hustler replacement parts only. These parts are available through your local Hustler dealer. To obtain prompt, efficient service, always provide the following information when ordering parts:

1. Correct part description and number, as given in the parts manual supplied with your owner's packet.
2. Correct model number.

All warranty repair and service must be handled through an authorized Hustler dealer. Arrangements should be made through your local service center.



# SAFETY PRECAUTIONS



This safety alert symbol is used to call attention to a message intended to provide a reasonable degree of **PERSONAL SAFETY** for operators and other persons during the normal operation and servicing of this equipment.

**DANGER** – Denotes immediate hazards which **WILL** result in severe personal injury or death.

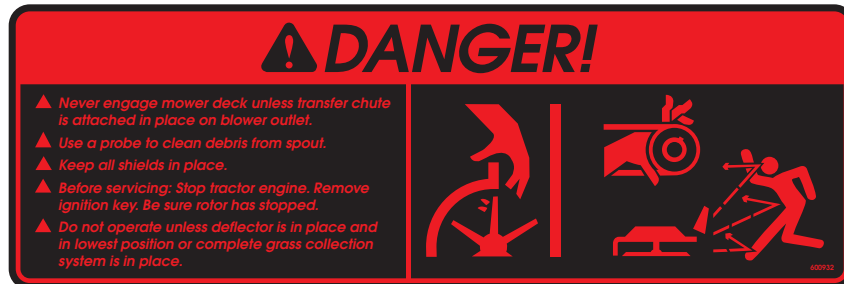
**WARNING** – denotes a potential hazard or unsafe practice which **COULD** result in severe personal injury or death.

All operators should read this manual and be instructed about safe operating and maintenance procedures. This is the owner's responsibility.

**Incorrect usage of this machine may result in severe injury. It is the owner's responsibility that all operators read this manual thoroughly and be properly trained in operation and maintenance before attempting to set-up, adjust, or service this**

**machine. This owner's manual contains many safety precautions that must be followed to avoid injury.**

- ▲ Always stop tractor engine, place steering control lever in the park brake position and remove ignition key when leaving operator's seat.
- ▲ Always be aware of any obstructions, especially small children, when backing or unloading the bags.
- ▲ Always keep safety shields and covers in place while operating machine.
- ▲ Never work on blower assembly or mower deck when the tractor engine is running.
- ▲ Never operate machine with bagger lid in the raised position except for unloading.
- ▲ Never attempt high speed maneuvering in crowded or congested areas.
- ▲ Always operate with complete catcher system or side discharge chute in place.



**Never engage mower deck unless transfer chute is attached in place on blower outlet.**

**Use a probe to clean debris from spout.**

**Keep all shields in place.**

**Before servicing: Stop tractor engine, remove ignition key and engage park brake. Be sure rotor has stopped.**

**Never operate unless discharge chute is in place and in lowest position or complete grass collection system is in place.**





# ASSEMBLY INSTRUCTIONS

These instructions apply to the assembly of the Hustler Two Bag Catcher to a FasTrak 48/54, FasTrak Super Duty 60", Mini Z 36/42, FasTrak Super Duty 36/42 or FasTrak 44/52 tractor.

It is intended that these units be installed by trained Hustler service personnel. If additional assistance is required, contact the Hustler Customer Service Department.

Directions given in these instructions, for example left and right, refer to direction while seated on the tractor.

Before proceeding, read thru the following instructions to familiarize yourself, while at the same time identify and inventory kit parts supplied.

Unpack and inspect all parts. Notify carrier of any shipping damages immediately.

## Parts list

Ref. No.	Part No.	Description	Qty.
1		Catcher hood assembly	1
2	601228	Transfer tube - upper	1
3	601229	Transfer tube - lower	1
4	108194	Blower assembly	1
5	601236	Bag	2
6	036236	CS .312-18 x 1.00 HX G5 ZN	2
7	024927	NT .250-20 HX G5 ZN	1
8	768515	FW .281 x .625 x .050/.080 HD	2
9	068551	NT .250-20HXZY NL	1
10	056077	CS .250-20 x 1.00 HX G5	1

## Deck adapter kits

When mounting the Two Bag Catcher on a FasTrak with a 48" deck, an **adapter kit, p/n 108630**, must be used. The following parts are included with this kit. Fig. 3-1

Ref. No.	Part No.	Description	Qty.
11	767954	FW .406x.812x.06 SAE HRD ZN	26
12	054502	NT .375-16 HX G5 ZN	8
13	108818	Heat shield	1
14	378760	Exhaust extension	1
15	769299	Screw	1
16	107924	Catcher brace base	2
17	108219	Catcher brace	1
18	108220	Catcher brace	1
19	080655	CS .375-16 x 1.50 HX G5 ZN	6
20	601226	Drive pulley	1
21	104489	Weight	5
22	783738	CS .625-11 x 3.00 Full HX G5 ZN	1
23	767962	FW .531x1.063x.09 SAE HRD ZN	8
24	008193	NT .500-13 HX G5 ZN	4
25	016568	CS .500-13 x 3.00 HX ZN	4
26	016428	CS .375-16 x 2.50 HX	4
27	108171	Frame mount tube	1
28	108222	Mount bracket	1
29	109102	Baffle	1

31	108718	Belt cover	1
32	601231	Belt	1

When mounting the Two Bag Catcher on a FasTrak with a 54" deck, an **adapter kit, p/n 108631**, must be used. The following parts are included with this kit. Fig. 3-1

Ref. No.	Part No.	Description	Qty.
11	767954	FW .406x.812x.06 SAE HRD ZN	26
12	054502	NT .375-16 HX G5 ZN	8
13	108818	Heat shield	1
14	378760	Exhaust extension	1
15	769299	Screw	1
16	107924	Catcher brace base	2
17	108219	Catcher brace	1
18	108220	Catcher brace	1
19	080655	CS .375-16 x 1.50 HX G5 ZN	6
20	601227	Drive pulley	1
21	104489	Weight	5
22	783738	CS .625-11 x 3.00 Full HX G5 ZN	1
23	767962	FW .531x1.063x.09 SAE HRD ZN	8
24	008193	NT .500-13 HX G5 ZN	4
25	016568	CS .500-13 x 3.00 HX ZN	4
26	016428	CS .375-16 x 2.50 HX	4
27	108171	Frame mount tube	1
28	108222	Mount bracket	1
29	109102	Baffle	1
31	108717	Belt cover	1
32	601232	Belt	1

When mounting the Two Bag Catcher on a Mini Z 36/42 or a FasTrak Super Duty 36/42 deck, an **adapter kit, p/n 108629**, must be used. The following parts are included with this kit. Fig. 3-2

Ref. No.	Part No.	Description	Qty.
11	767954	FW .406x.812x.06 SAE HRD ZN	20
12	054502	NT .375-16 HX G5 ZN	9
19	080655	CS .375-16 x 1.50 HX G5 ZN	6
20	601225	Drive pulley	1
21	108488	Weight	1
22	783738	CS .625-11 x 3.00 Full HX G5 ZN	1
26	109101	Baffle	1
30	056036	CS .375-16 x 2.25 HX	7
31	108022	Belt cover	1
32	601233	Belt	1
33	016444	CS .375-16 x 3.00 HX G5 ZN	2
34	601237	Knob	2
35	108489	Weight	1
36	109097	Mount w/a, RH	1
37	109098	Mount w/a, LH	1
38	109099	Support tube w/a	1
39	109089	Rear engine guard	1

When mounting the Two Bag Catcher on a FasTrak 44” deck, an **adapter kit, p/n 109516**, must be used. The following parts are included with this kit. Fig. 3-3

Ref. No.	Part No.	Description	Qty.
11	767954	FW .406x.812x.06 SAE HRD ZN	12
12	054502	NT .375-16 HX G5 ZN	6
14	378760	Exhaust extension	1
15	769299	Screw	1
20	601226	Drive pulley	1
21	104489	Weight	5
22	783738	CS .625-11 x 3.00 Full HX G5 ZN	1
23	767962	FW .531x1.063x.09 SAE HRD ZN	8
24	008193	NT .500-13 HX G5 ZN	4
25	016568	CS .500-13 x 3.00 HX ZN	4
26	016428	CS .375-16 x 2.50 HX	2
27	108171	Frame mount tube	1
28	108222	Mount bracket	1
29	109265	Baffle	1
30	056036	CS .375-16 x 2.25 HX	2
31	109598	Belt cover	1
32	601659	Belt	1
39	109468	Rear engine guard	1
47	109470	Brace, RH	1
48	109469	Brace, LH	1
49	109471	Extension bracket	1
50	036244	CS .375-16 x 1.00 HX G5 ZN	4
51	109522	Deck stop plate	1
52	052837	CS .312-18 x 1.50 HX G5 ZN	1
53	768523	FW .343 x .687 x .051/.080	1
54	034272	NT .312-18 HX G5 ZN	1

When mounting the Two Bag Catcher on a FasTrak 52” deck, an **adapter kit, p/n 109517**, must be used. The following parts are included with this kit. Fig. 3-3

Ref. No.	Part No.	Description	Qty.
11	767954	FW .406x.812x.06 SAE HRD ZN	12
12	054502	NT .375-16 HX G5 ZN	6
14	378760	Exhaust extension	1
15	769299	Screw	1
20	601227	Drive pulley	1
21	104489	Weight	5
22	783738	CS .625-11 x 3.00 Full HX G5 ZN	1
23	767962	FW .531x1.063x.09 SAE HRD ZN	8
24	008193	NT .500-13 HX G5 ZN	4
25	016568	CS .500-13 x 3.00 HX ZN	4
26	016428	CS .375-16 x 2.50 HX	2
27	108171	Frame mount tube	1
28	108222	Mount bracket	1
29	109268	Baffle	1
30	056036	CS .375-16 x 2.25 HX	2
31	109521	Belt cover	1
32	601231	Belt	1
39	109468	Rear engine guard	1
47	109470	Brace, RH	1
48	109469	Brace, LH	1
49	109471	Extension bracket	1

50	036244	CS .375-16 x 1.00 HX G5 ZN	4
51	109522	Deck stop plate	1
52	052837	CS .312-18 x 1.50 HX G5 ZN	1
53	768523	FW .343 x .687 x .051/.080	1
54	034272	NT .312-18 HX G5 ZN	1

When mounting the Two Bag Catcher on a FasTrak Super Duty 60” deck, an **adapter kit, p/n 110159**, must be used. The following parts are included with this kit. Fig. 3-4

Ref. No.	Part No.	Description	Qty.
7	024927	NT .250-20 HX GR5 ZN	2
11	767954	FW .406x.812x.06 SAE HRD ZN	12
12	054502	NT .375-16 HX G5 ZN	6
13	108818	Heat shield	1
14	378760	Exhaust extension	1
15	769299	Screw	1
20	601227	Drive pulley	1
21	104489	Weight	1
22	783738	CS .625-11 x 3.00 Full HX G5 ZN	1
23	767962	FW .531x1.063x.09 SAE HRD ZN	4
24	008193	NT .500-13 HX G5 ZN	2
26	056036	CS .375-16 x 2.25 HX	6
27	108171	Frame mount tube	1
28	109641	Mount bracket	1
29	109998	Baffle	1
31	109995	Belt cover	1
32	601667	Belt	1
40	025403	FW .281 X .625 X .062 ZN	2
41	789214	Weight	1
42	042630	CS .500-13 X 6.50 HX GR5 ZN	2
43	109612	Bumper support	1
44	712976	FW .531 X 1.375 X .125 ZN/711	4
45	068023	CS .500-13X3.75 HX GR8 ZN	2
46	023317	NT .500-13 UNT LK G5 ZN	2

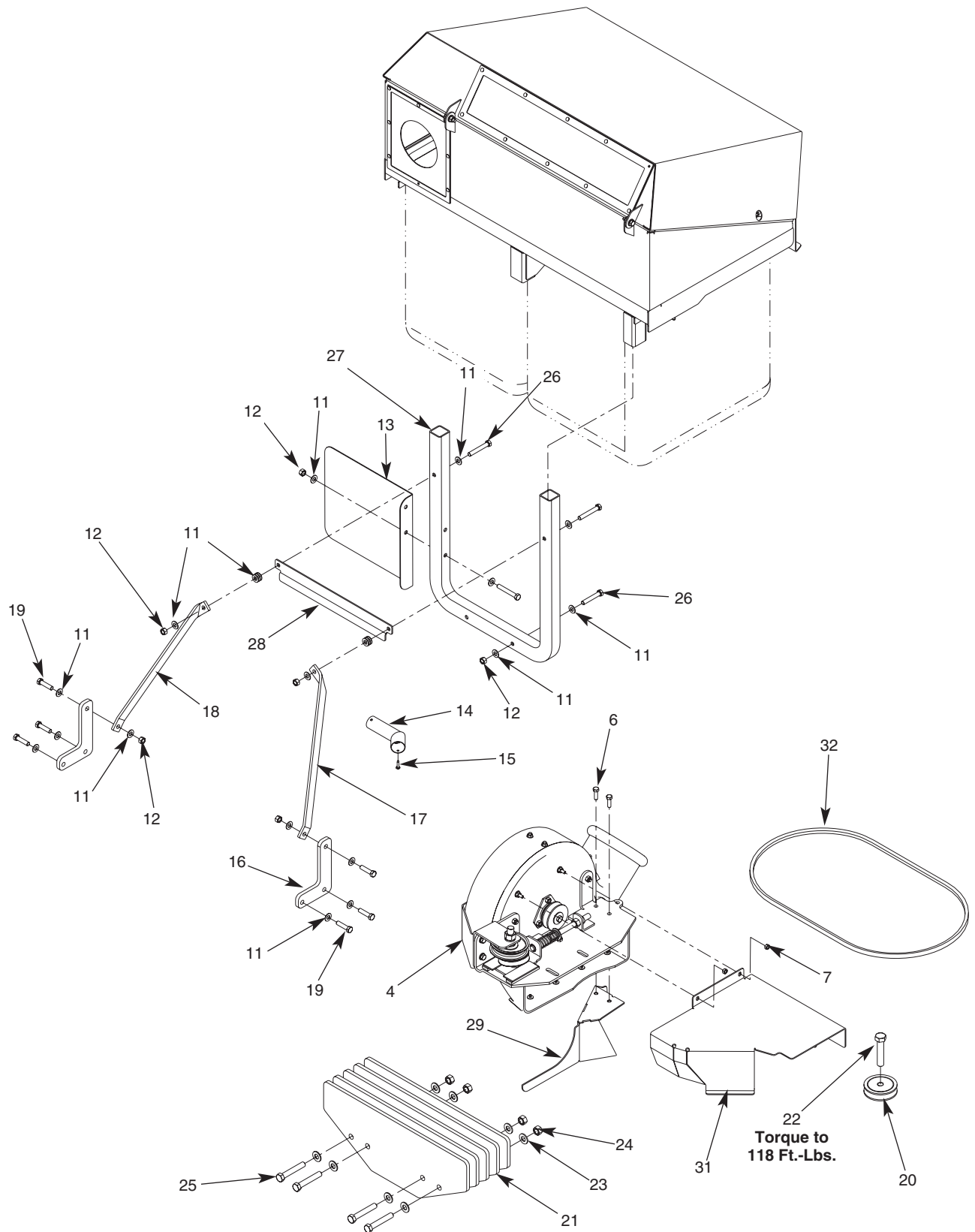
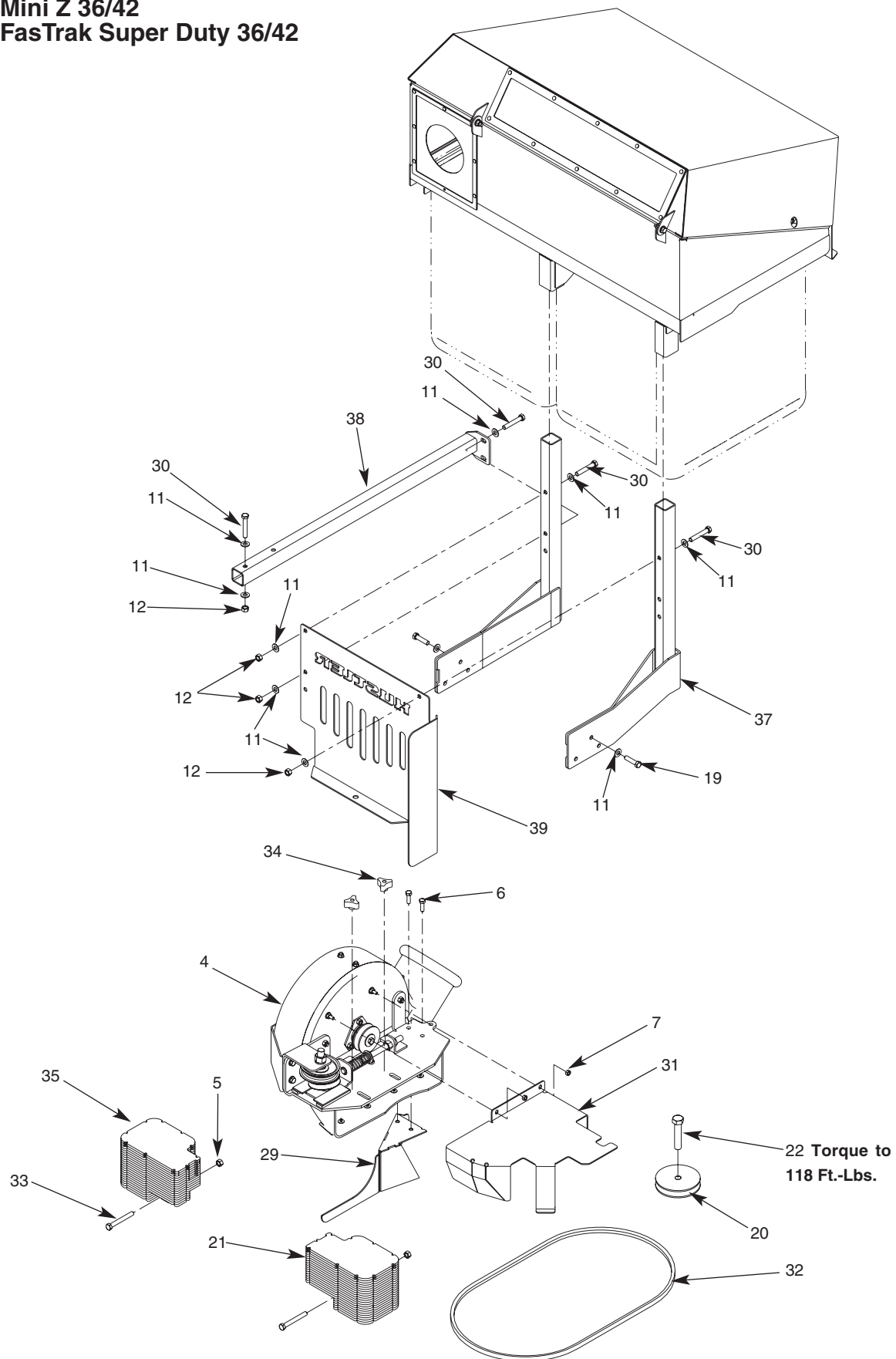


Figure 3-1

**Mini Z 36/42  
FasTrak Super Duty 36/42**



**Figure 3-2**

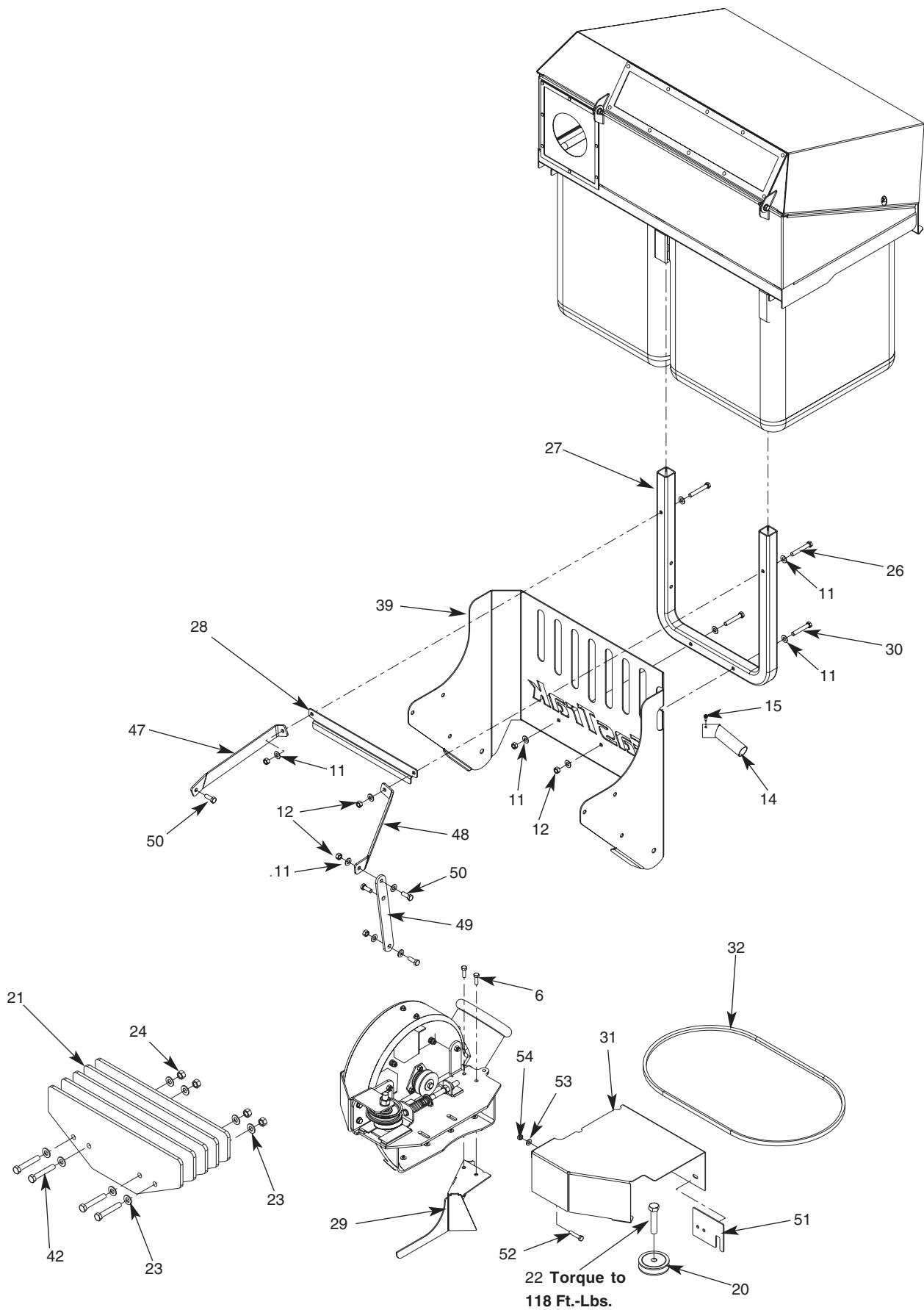


Figure 3-3

# FasTrak Super Duty 60"

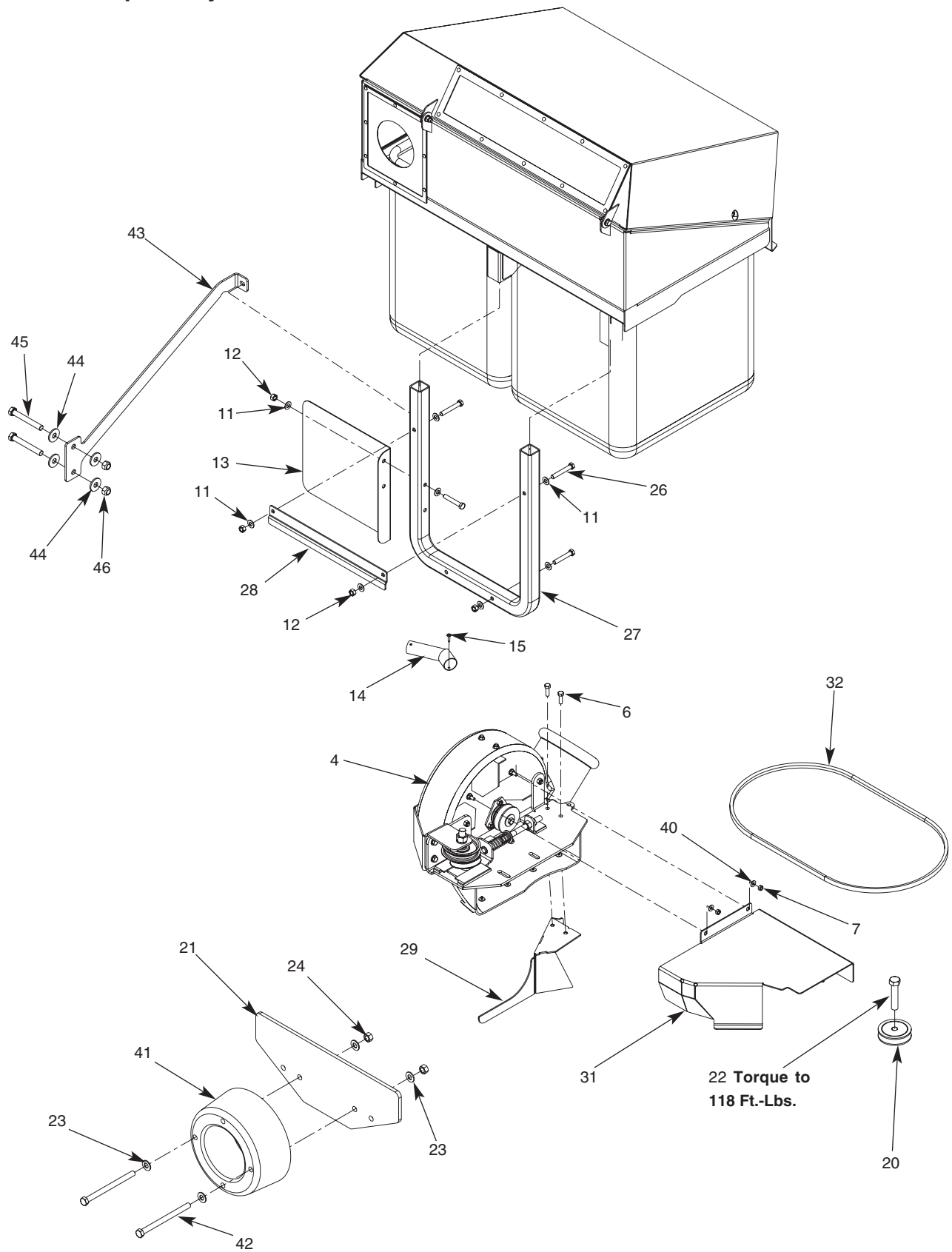
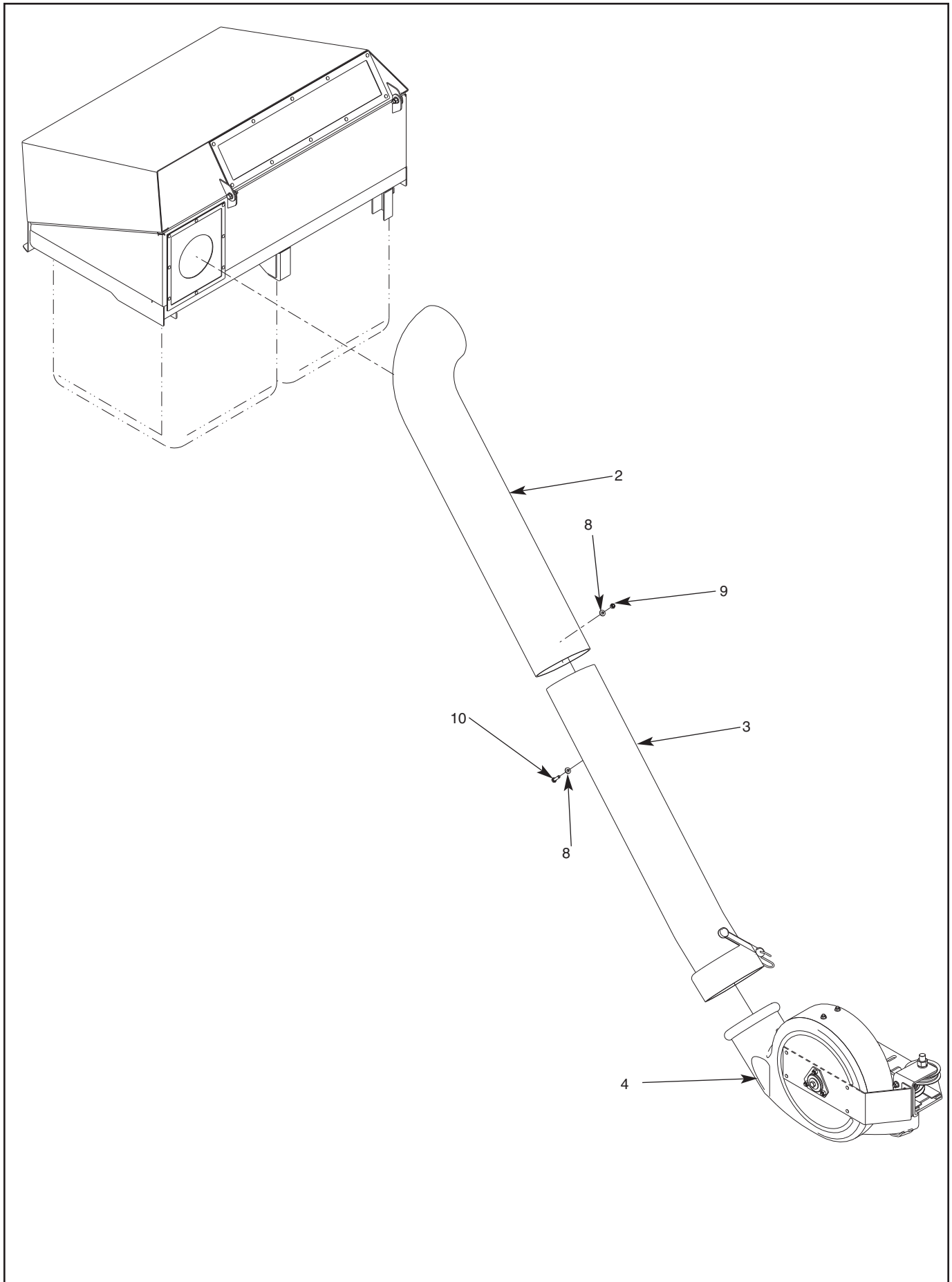


Figure 3-4



**Figure 3-5**  
3-7



## Mower deck preparation

**NOTE:** Refer to Figure 3-1, 3-2, 3-3, and 3-4 when assembling the unit.

1. Park the tractor on a flat surface. Place the steering control levers in the park brake position and shut off the ignition switch and remove the key from the switch. Disconnect the negative battery cable.
2. Remove the right side pulley cover, discharge chute and discharge chute bracket.  
**NOTE:** Retain these parts as they will be re-installed when the Catcher is removed.
3. Remove the existing spindle bolt and place the existing cup washer between the head of the new bolt (Ref. # 22) and the drive pulley (Ref. # 20). Torque the bolt into the pulley before threading the bolt into the spindle shaft. Torque top spindle bolt to 118 ft.-lbs. Thread the pulley, cup washer and bolt assembly into the right hand spindle shaft. Torque bolt to 118 ft.-lbs. Fig. 3-6
4. Attach the baffle (Ref. # 29), supplied with the correct adapter kit, to the underneath side of the blower assembly per Fig. 3-7.
5. Attach the blower assembly to the deck using the hardware shown per Fig. 3-8. **NOTE:** Adjust the blower housing until the deck opening is sealed against the blower housing. Tighten the bolts.
6. Install and route the blower belt (Ref. # 32), supplied with the correct adapter kit, to the deck per Fig. 3-9. Tension the belt, using the belt tension bolt until the the tension spring is compressed to a length of 3"  $\pm .25 / -.00$ ".
7. Attach the belt cover (Ref. # 31) to the blower housing studs. Fig. 3-10

**44/52 decks only:** Remove the bolt and nut shown in Fig. 3-11 and replace it with the hardware shown. Lock the belt cover in place using the new hardware.

**44/52 decks only:** Attach the deck stop plate (Ref. #51) to the belt cover. Adjust it using the holes shown for the proper deck. Fig. 3-3



**WARNING:** Do not operate deck without discharge chute or complete catcher system in place.

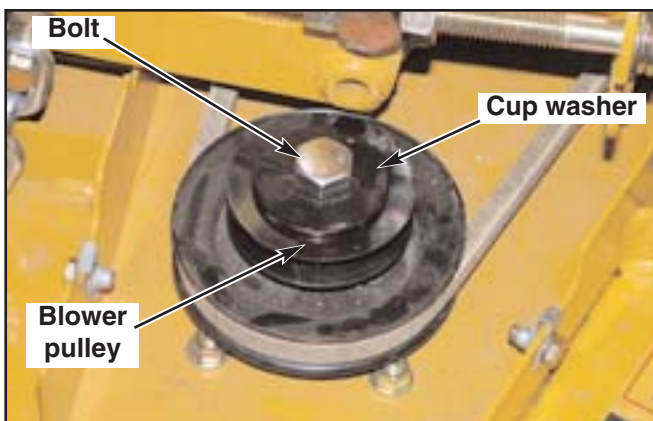


Figure 3-6



Figure 3-7

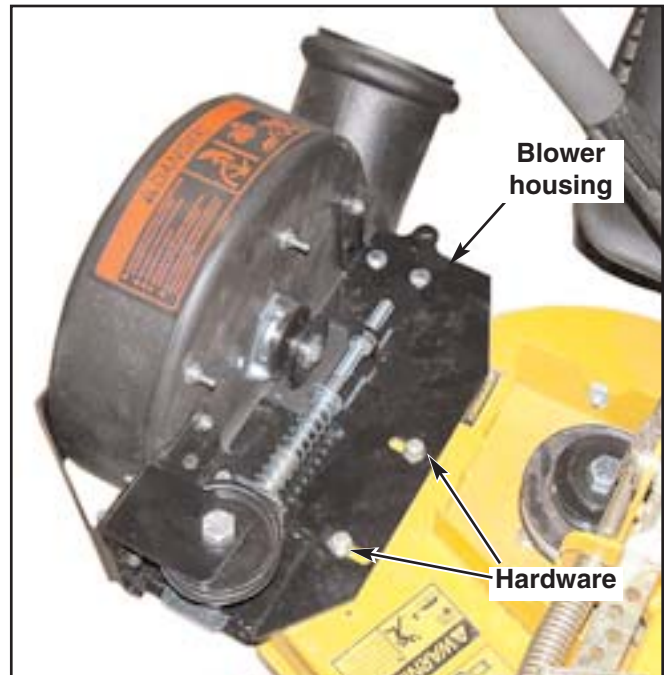


Figure 3-8

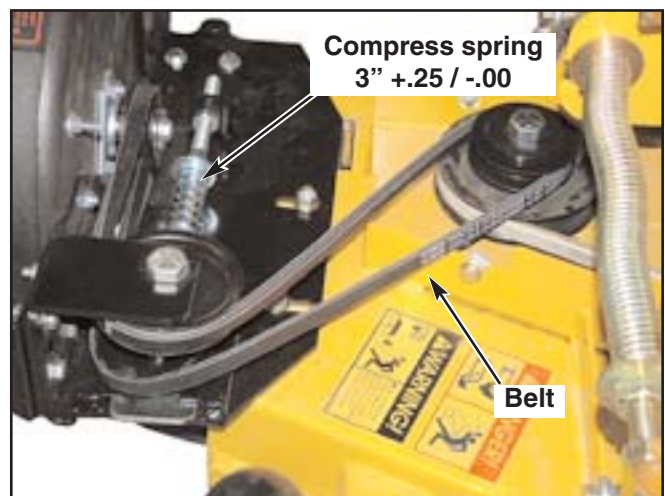


Figure 3-9



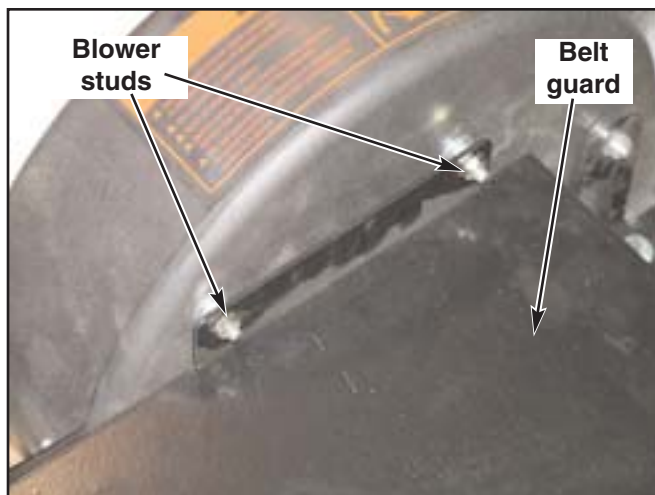


Figure 3-10

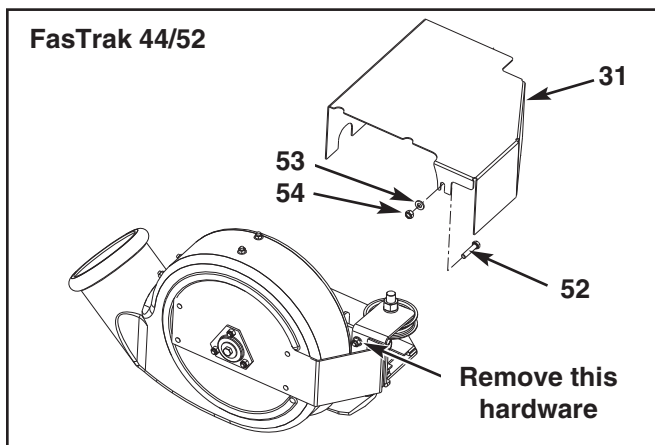


Figure 3-11

## Tractor preparation - FasTrak 48/54



**WARNING:** Allow engine and muffler to cool before assembling the unit to the tractor.

1. Attach heat shield (Ref. # 13) to the frame mount tube (Ref. # 27). Fig. 3-12
2. Attach the frame mount tube (Ref. # 27) to the rear engine guard. Fig. 3-12
3. Attach the mounting bracket (Ref. # 28) to the frame mount tube (Ref. # 27). Fig. 3-12
4. Attach the two catcher braces (Ref. # 17 and Ref. # 18) to the frame mount tube (Ref. # 27). Fig. 3-13
5. Remove the two lower bolts on each of the stabilizer wheels and attach the two catcher brace bases (Ref. # 16) using the hardware shown. Fig. 3-14 & 3-15
6. Attach the lower part of the two catcher braces (Ref. # 17 and Ref. # 18) to the two catcher brace bases. Fig. 3-15
7. Slide the catcher hood assembly (Ref. # 1) onto the frame mount tube (Ref. # 27). Fig. 3-16
8. Slide the exhaust extension (Ref. # 14) onto the muffler exhaust tube. Rotate the extension so the hole is located on bottom and drill a 5/32" dia. hole in the

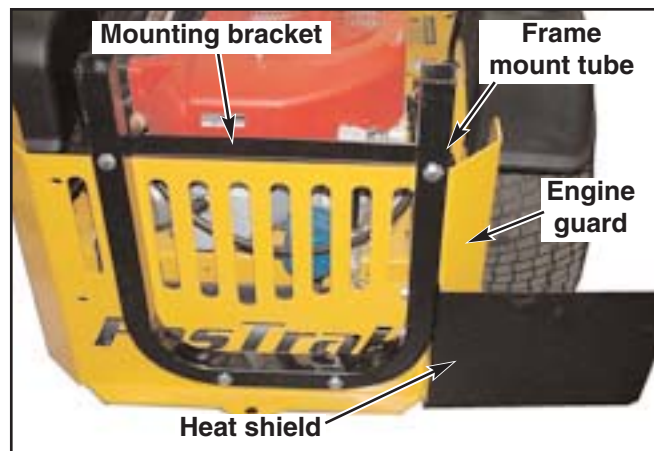


Figure 3-12

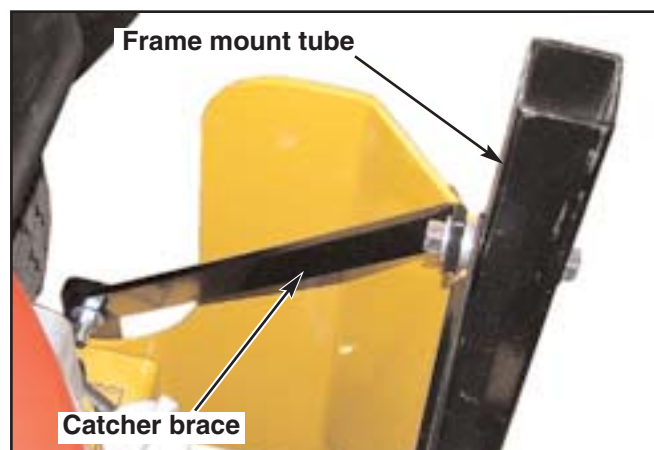


Figure 3-13

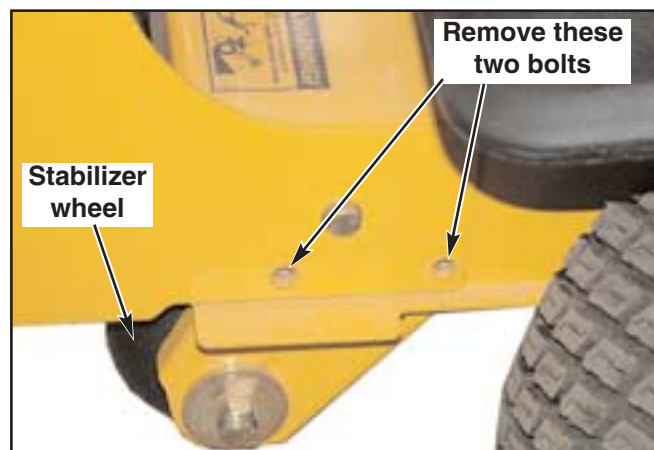


Figure 3-14

muffler tailpipe. Attach the exhaust extension using the screw (Ref. # 15) per Fig. 3-17

9. Remove the operator's foot rest from the tractor. Bolt the weights (Ref. #21) to each other and then attach them to the tractor per Fig. 3-18. Re-attach the operator's foot rest to the tractor.
10. Place the bags in the catcher assembly, making sure that the non-mesh side of the bag is towards the operator, close the hood and insert the pin. Fig. 3-19 & Fig. 3-20

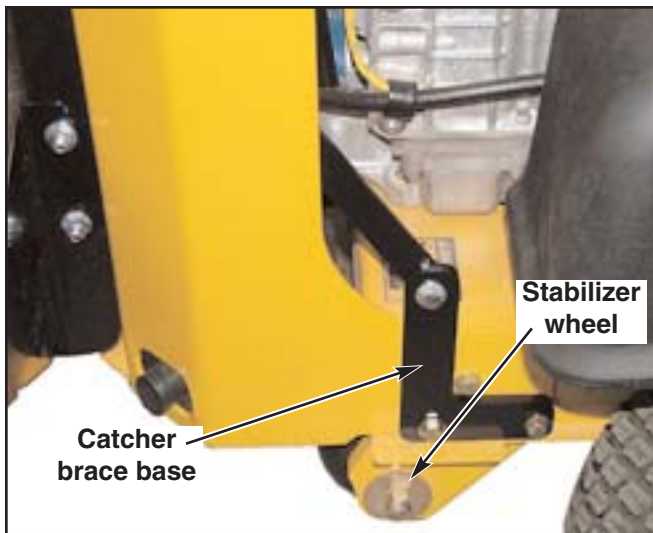


Figure 3-15

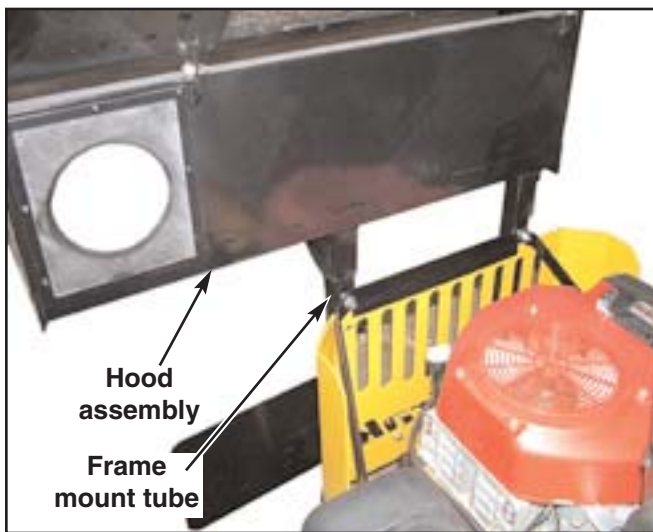


Figure 3-16

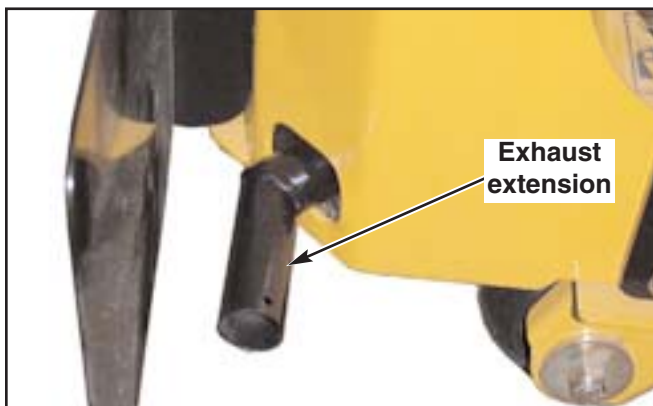


Figure 3-17

### Tractor preparation - Mini Z 36/42 & FasTrak Super Duty 36/42



**WARNING:** Allow engine and muffler to cool before assembling the unit to the tractor.



Figure 3-18

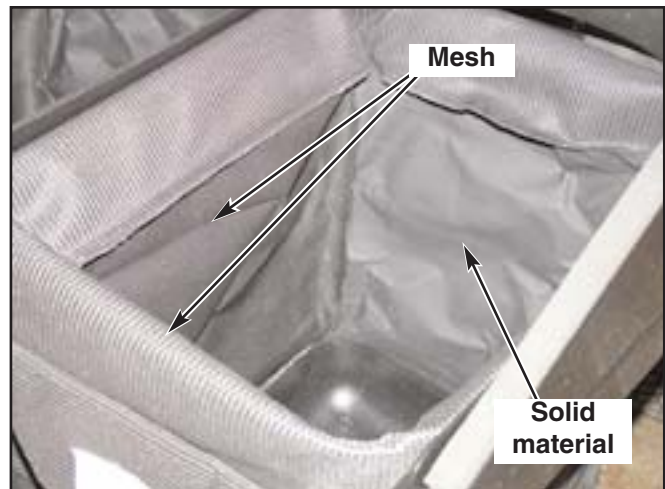


Figure 3-19

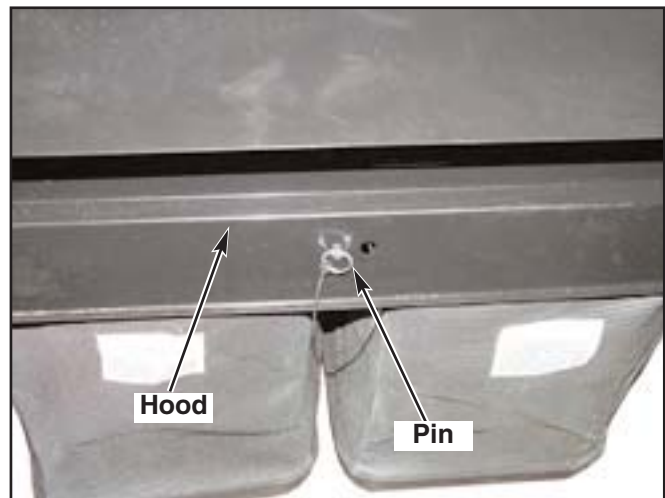


Figure 3-20

1. Park the tractor on a flat surface, place steering control levers in the park brake position, shut-off engine and remove ignition switch key.
2. Assemble the right mount (Ref. #36), left mount (Ref. #37), support tube (Ref. #38) and rear engine guard (Ref. #39) together using the hardware shown. Fig. 3-2
3. Remove the rear engine guard from the tractor.
4. Attach the assembly to the tractor per Fig. 3-2.



5. Remove the right drive tire.



**WARNING:** Never work under the machine or attachment unless it is safely supported with jack stands. Make certain machine is secure when it is raised and placed on the jack stands. The jack stands should not allow the machine to move when the engine is running and the drive wheels are rotating. Use only certified jack stands. Use only appropriate jack stands, with a minimum weight rating of 2000 pounds to block the unit up. Use in pairs only. Follow the instructions supplied with the vehicle stands.

6. If the tractor frame has two pilot holes located next to the right fuel tank behind the seat then drill two .406 dia. holes through the tractor frame.  
If there are no pilot holes located in the tractor frame then use the two holes in the brace (Ref. # 38) as drill guides, locate and drill two .406 dia. holes through the tractor frame. Fig. 3-21
7. Attach the brace (Ref. # 38) to the tractor frame using the hardware shown in Fig. 3-2.



Figure 3-21



Figure 3-22

8. Re-attach the drive tire and torque lug nuts to 65-75 ft.lbs. Lower the tractor.
9. Attach the weights (Ref. # 21 & # 35) to the tractor per Fig. 3-22.
10. Slide the catcher hood assembly (Ref. # 1) onto the frame mount tube (Ref. # 27). Fig. 3-16
11. Place the bags in the catcher assembly, making sure that the non-mesh side of the bag is towards the operator, close the hood and insert the pin. Fig. 3-19 & Fig. 3-20

## Tractor preparation - FasTrak 44/52



**WARNING:** Allow engine and muffler to cool before assembling the unit to the tractor.

1. Park the tractor on a flat surface, place steering control levers in the park brake position, shut-off engine and remove ignition switch key.
2. Remove the rear engine guard from the tractor.
3. Remove the lower left rear rivet nut. Fig. 3-23
4. Remove the left rear upper and lower fuel tank mounting bolts. Fig. 3-23
5. Remove the right rear upper fuel tank mounting bolt. Fig. 3-24
6. Attach the extension bracket (Ref. # 49) to the tractor frame using the hardware shown in Fig. 3-3.
7. Attach the rear bumper (Ref. # 39), supplied with this kit, to the tractor using the existing hardware. Fig. 3-3
8. Assemble the frame mount tube (Ref. # 27) to the rear engine guard using the hardware shown. Fig. 3-3
9. Assemble the mounting bracket (Ref. # 28), left brace (Ref. # 48) and right brace (Ref. # 47) to the frame mount tube (Ref. # 27). Fig. 3-3
10. Attach the left brace (Ref. # 48) to the extension bracket (Ref. # 49). Do not tighten the hardware. Fig. 3-3 & 3-25
11. Attach the right brace (Ref. # 47) to the right fuel tank mount using the hardware shown. Do not tighten the hardware. Fig. 3-3 & 3-24

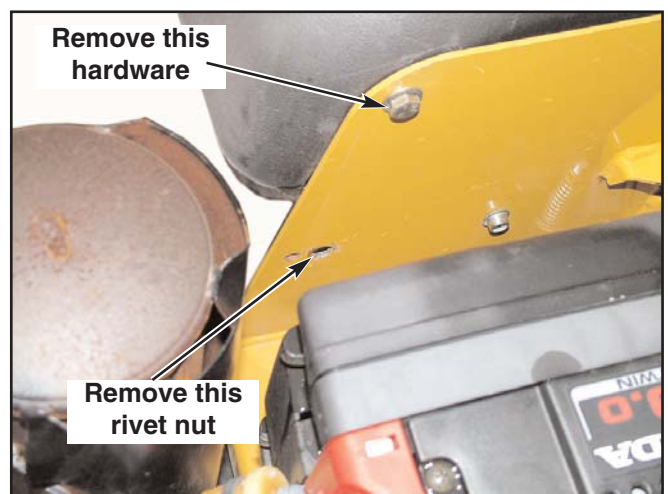


Figure 3-23

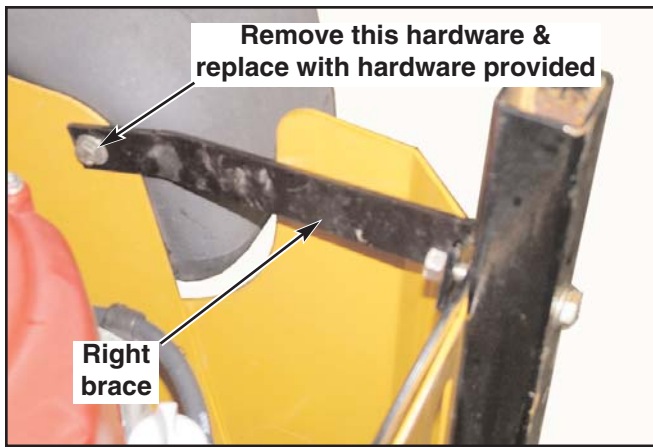


Figure 3-24

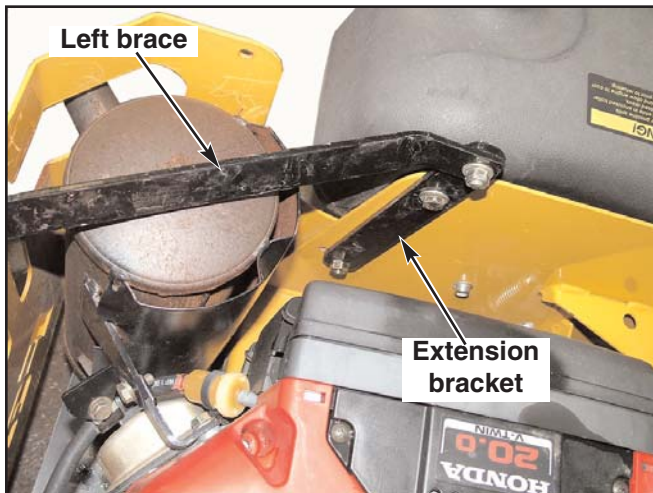


Figure 3-25

12. Tighten all hardware.
13. Remove the rear flotation wheels from the original rear engine guard and attach them to the new rear engine guard.
14. Remove the operator's foot rest from the tractor. Bolt the weights (Ref. #21) to each other and then attach them to the tractor per Fig. 3-18. Re-attach the operator's foot rest to the tractor.
15. Slide the catcher hood assembly (Ref. # 1) onto the frame mount tube (Ref. # 27). Fig. 3-16
16. Place the bags in the catcher assembly, making sure that the non-mesh side of the bag is towards the operator, close the hood and insert the pin. Fig. 3-19 & Fig. 3-20

## Tractor preparation - FasTrak Super Duty 60"



**WARNING:** Allow engine and muffler to cool before assembling the unit to the tractor.

1. Park the tractor on a flat surface, place steering control levers in the park brake position, shut-off engine and remove ignition switch key.
2. Attach heat shield (Ref. # 13) to the frame mount tube (Ref. # 27). Fig. 3-4

3. Attach the frame mount tube (Ref. # 27) to the rear engine guard. Fig. 3-4
4. Attach the mounting bracket (Ref. # 28) and bumper support (Ref. # 43) to the frame mount tube (Ref. # 27). Fig. 3-4
5. Remove the right drive tire.



**WARNING:** Never work under the machine or attachment unless it is safely supported with jack stands. Make certain machine is secure when it is raised and placed on the jack stands. The jack stands should not allow the machine to move when the engine is running and the drive wheels are rotating. Use only certified jack stands. Use only appropriate jack stands, with a minimum weight rating of 2000 pounds to block the unit up. Use in pairs only. Follow the instructions supplied with the vehicle stands.

6. Attach the bumper support (Ref. # 43) to the two holes located in the tractor frame behind the right fuel tank using the hardware shown. Fig. 3-4 & Fig. 3-26
7. Slide the catcher hood assembly (Ref. # 1) onto the frame mount tube (Ref. # 27). Fig. 3-16
8. Slide the exhaust extension (Ref. # 14) onto the muffler exhaust tube. Rotate the extension so the hole is located on bottom and drill a 5/32" dia. hole in the muffler tailpipe. Attach the exhaust extension using the screw (Ref. # 15) per Fig. 3-4.
9. Re-attach the drive tire and torque lug nuts to 65-75 ft.lbs. Lower the tractor.
10. Attach the weight plate (Ref. # 21) and weight (Ref. # 41) to the tractor per Fig. 3-4 & 3-27
11. Place the bags in the catcher assembly, making sure that the non-mesh side of the bag is towards the operator, close the hood and insert the pin. Fig. 3-19 & Fig. 3-20

## Final Connection

1. Slide the two tubes (Ref. # 9 and Ref. 10) together. Fig. 3-28  
Insert the upper tube into the catcher hood and orientate per Fig. 3-29.



Figure 3-26



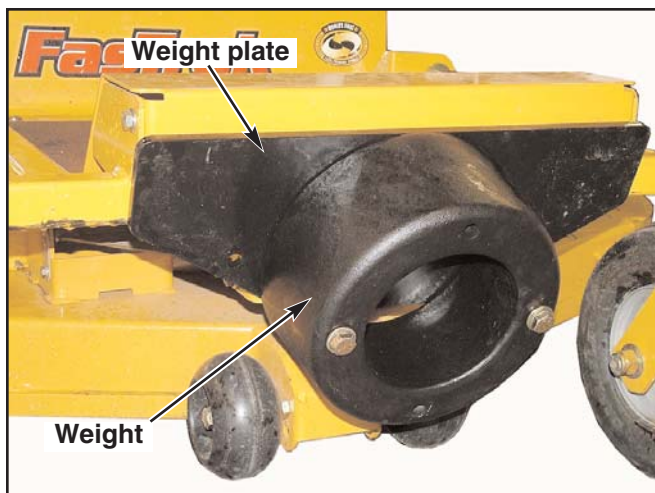


Figure 3-27

2. Slide the lower tube (Ref. # 10) onto the blower housing tube. Fig. 3-28
3. Set the deck in the lowest position. Make sure the upper tube is orientated properly. Fig. 3-29  
Locate and drill a 9/32" diameter hole through both tubes. Fig. 3-31
4. Remove the lower tube from the blower housing tube and bolt the two tubes together per Fig. 3-5.
5. Slide the lower tube (Ref. # 10) onto the blower housing tube and secure in place using the bungee cord. Fig. 3-30

**NOTE:** It will be necessary to raise the blower hood and slide the upper tube farther into the blower area to allow the lower tube to slide over the blower housing tube. After sliding the tubes down make sure that the upper tube is still orientated correctly and close the blower hood.

6. Reconnect the negative battery cable.

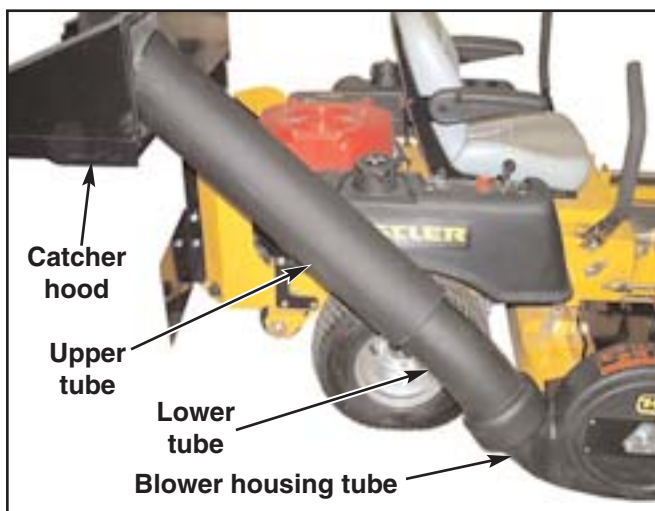


Figure 3-28



Figure 3-29

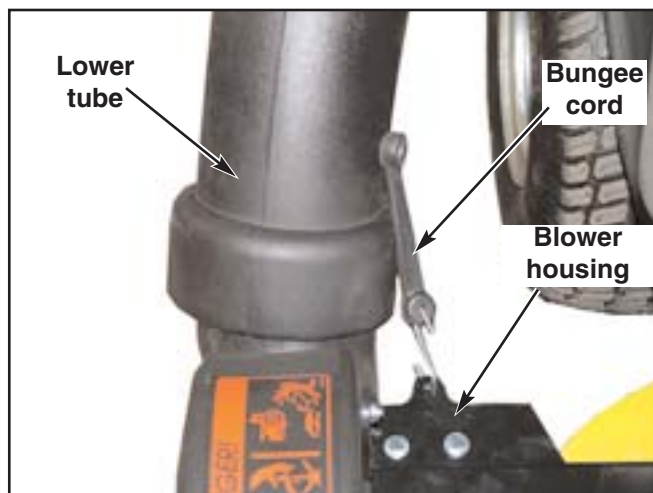


Figure 3-30

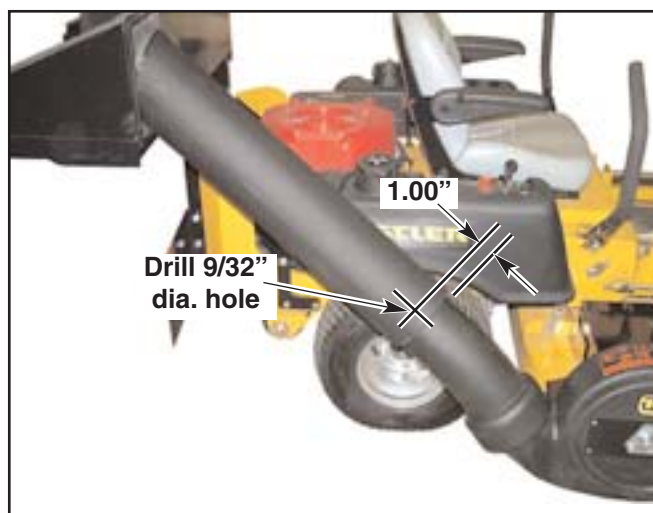


Figure 3-31

# OPERATION

## Vacuum pickup and collection

Follow normal tractor and mower deck start-up and operating procedures as outlined in the tractor owner's manual. The blower assembly will operate when the mower deck clutch switch is engaged. To stop the blower assembly, return the deck clutch switch to the disengaged position.

Proceed to mow in the normal manner and occasionally glance at the window located in the upper front of the catcher hood (Fig. 4-1). The window is designed to allow the operator to see when the bags are getting full. When the bags are filled, move the deck clutch switch to the disengaged position. Then drive the machine to the unloading area.

It is best that the bags be unloaded before the blower and tube areas become clogged. If clogging occurs, it will be necessary to clean the blower and tube areas of all material before starting to mow again.



**WARNING:** Make certain the engine is turned off, the steering control levers are in the park brake position and the ignition key is removed from the ignition switch before cleaning the blower and chute areas.



**WARNING:** Never place hands or feet into the blower housing spout. There is an impeller located inside the housing that will cause severe injury. Use a probe to clean debris from spout.



**WARNING:** Never engage mower deck unless both bags are installed and the hood is lowered. Also, both transfer tubes must be in place on the blower outlet and the hood assembly and the bungee cord is connected. Fig. 3-20 & Fig. 3-22

When the bags are full, turn the deck and the blower off (deck clutch switch in the disengaged position). Then drive the machine to the unloading area.



Figure 4-1

## Unloading



**WARNING:** Make certain the deck clutch switch is in the disengaged position before unloading.

Park the unit on a level surface, shut the engine off and place the steering control levers in the park brake position.

Get off the tractor, remove the pin from the hood assembly. Raise the hood and remove the bags and dump them. Fig. 4-2

Return the bags to the catcher assembly, making sure that the non-mesh side of the bag is towards the operator, close the hood and re-insert the pin. Fig. 4-2 & Fig. 4-3

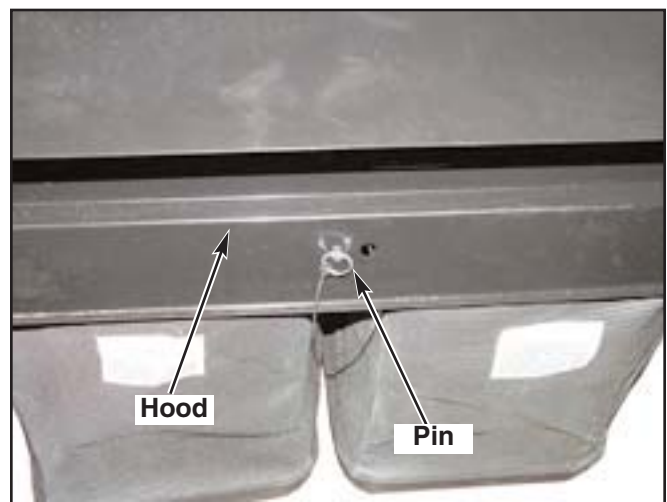


Figure 4-2

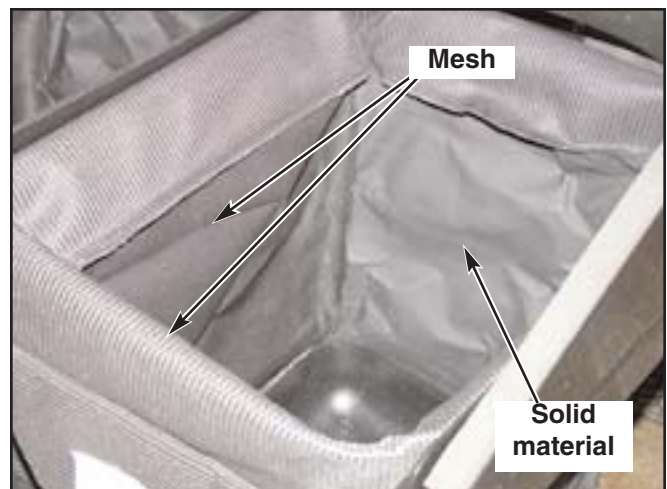


Figure 4-3

# MAINTENANCE

## Blower housing and transfer tube



**WARNING:** Never work on the blower assembly or mower deck when the tractor engine is running.



**WARNING:** Clean flammable material from machine. Prevent fires by keeping engine compartment, top of deck, exhaust area, battery, hydraulic lines, fuel line, fuel tank and operator's station clean of accumulated trash, grass clippings, and other debris. Always clean up spilled fuel and oil.

The blower and tubes (Fig. 5-1) should be kept clean and free of any accumulation of matted clippings or other obstructions. Occasional clogging may also occur when working in heavy, wet or matted grass.



**WARNING:** Never place hands or feet into the blower housing spout. There is an impeller located inside the housing that will cause severe injury. Use a probe to clean debris from spout.



**WARNING:** Never engage mower deck unless both bags are installed and the hood is lowered. Also, both transfer tubes must be in place on the blower outlet and the hood assembly and the bungee cord is connected. Fig. 3-19 & Fig. 3-23

To service the blower housing: remove the belt cover and unbolt the housing from the deck.

To service the transfer tubes, remove the upper and lower tubes from the unit. The tubes can be cleaned by using soapy water and washing the inside of the tubes with a pressure washer. Rinse with water.

To clean the bags, hand wash with soap and water, rinse with clean water.

## Blower drive belt

The blower drive belt (Fig. 5-2) is located under the belt cover. This belt is spring tensioned and should not need adjustment.

When belt replacement becomes necessary, check the condition of the pulleys. Clean the grooves and check for excessive wear. A new belt should not run against the bottom of groove. If it does bottom out, the the pulley needs replacing.

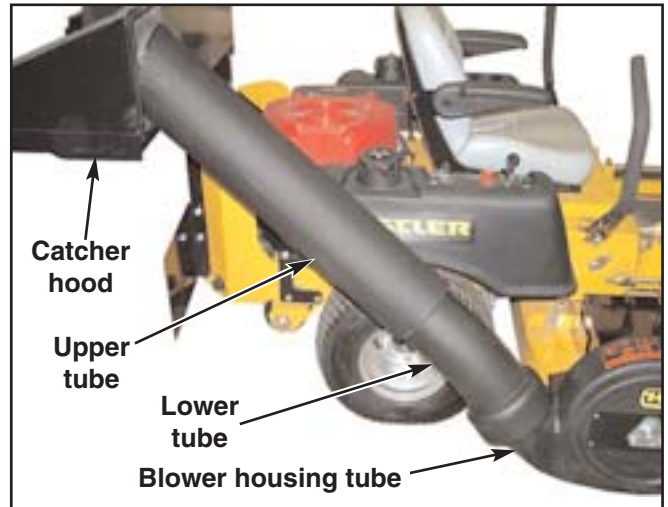


Figure 5-1

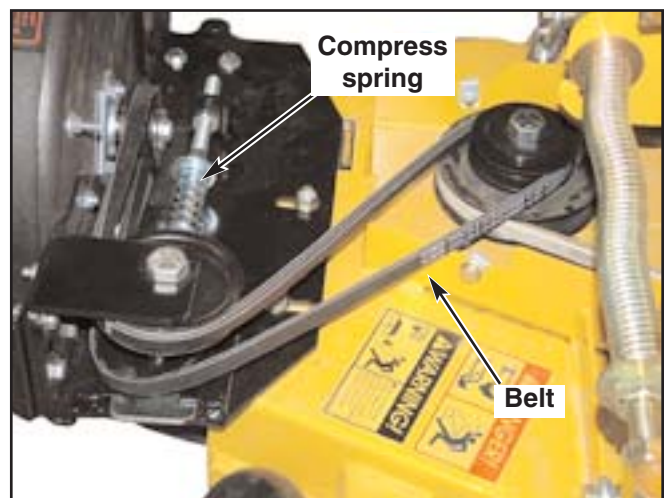


Figure 5-2





# STORAGE

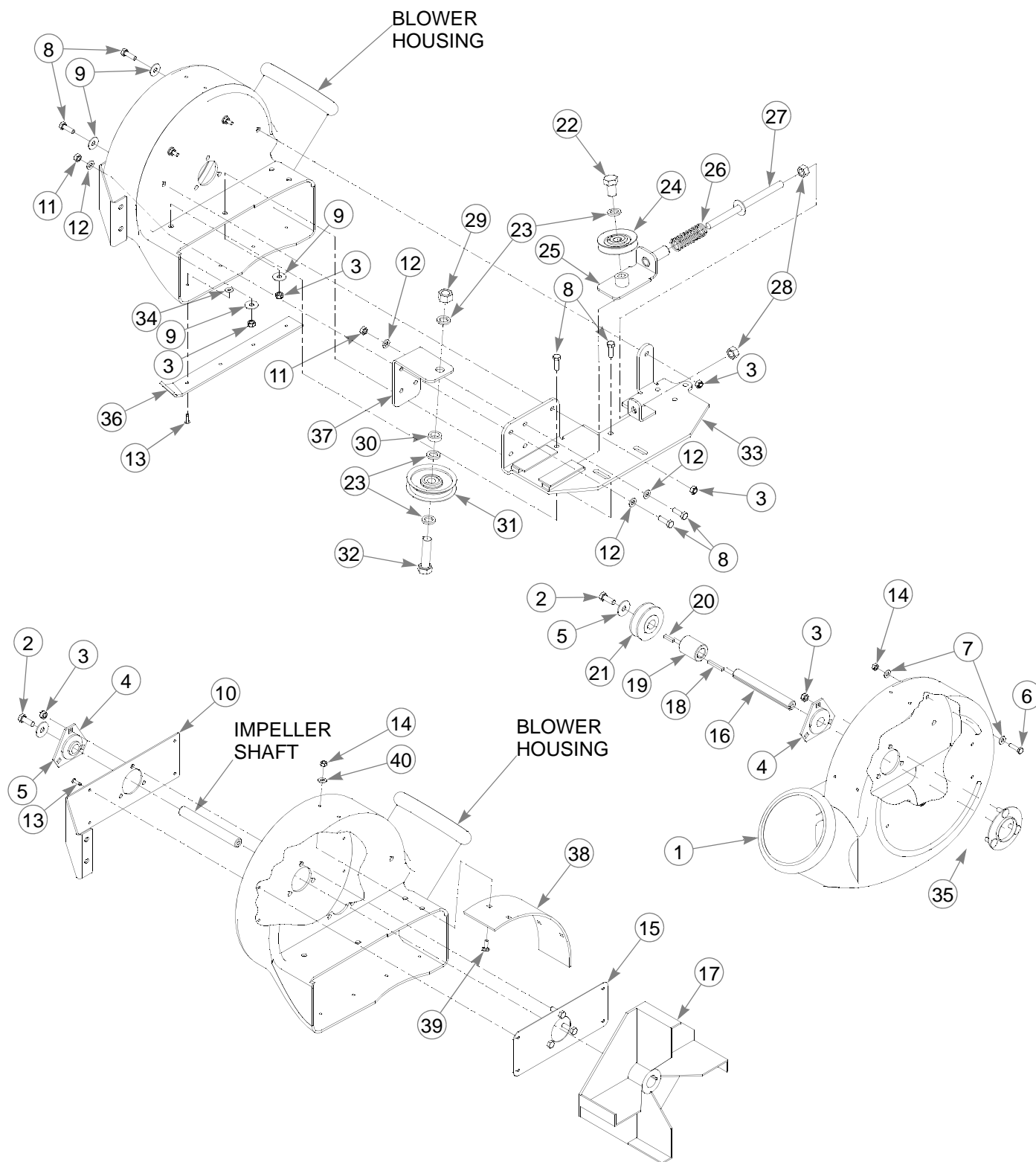
When your mower is to set idle for a period of time, scrape and remove the matted grass material from inside the hood and clean the bags. Clean the discharge area in the blower assembly likewise. A light coating of oil applied to these surfaces will help retard rusting.

Check for loose or missing hardware, tighten or replace. Also check for badly worn or damaged parts, consider replacing them at this time. Touch up chipped paint areas, your Hustler dealer has aerosol spray paint available.



---

# **Blower Assembly-108194**



---

## **Blower Assembly-108194**

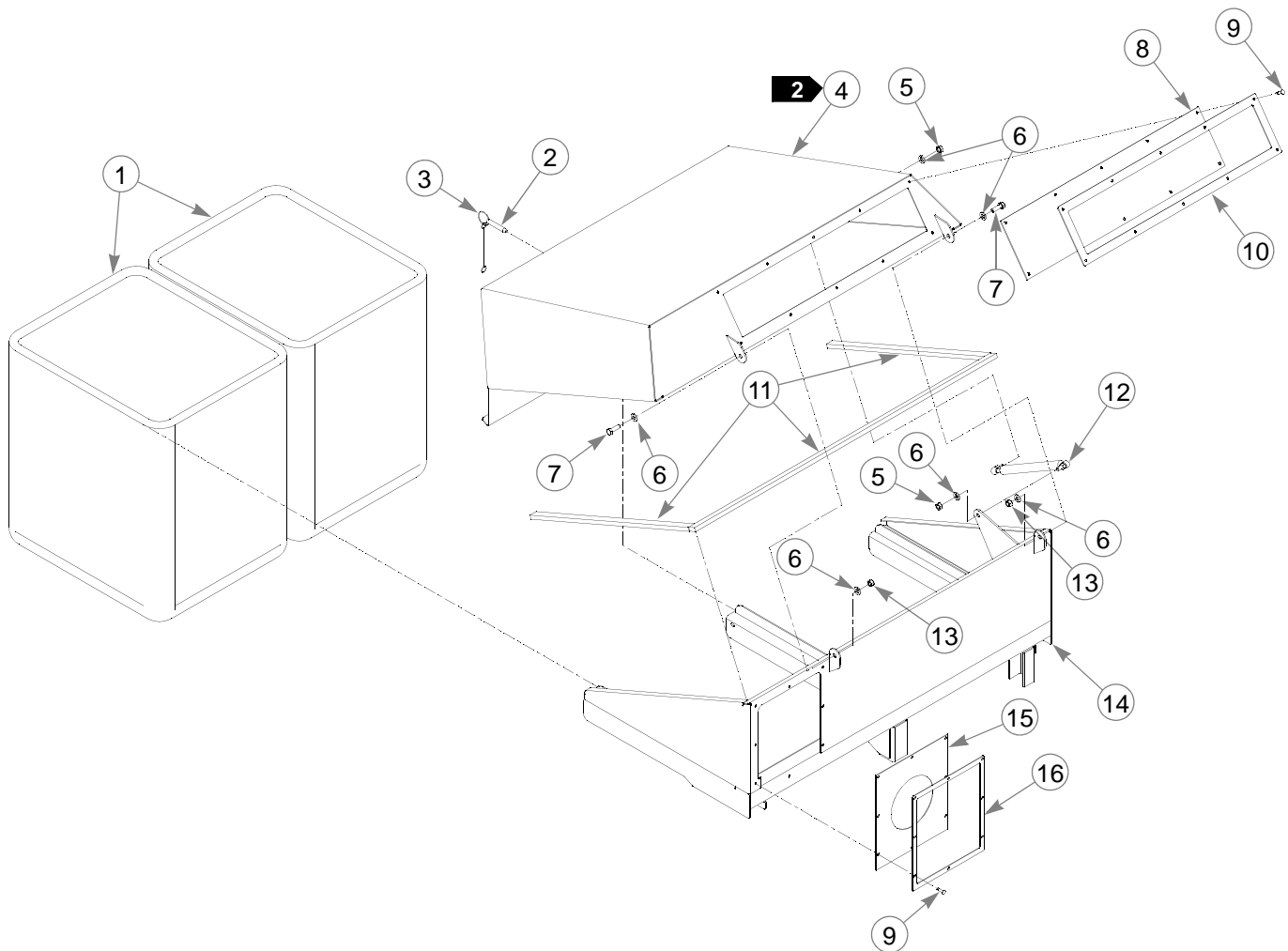
INDEX NO.	PART NO.	QTY.	DESCRIPTION
1	601080	1	BLOWER HOUSING
2	036244	2	CS .375-16 X 1.00 HX G5
3	058776	10	NT .312-18 HXZY NL
4	601071	2	IMPELLER SHAFT BEARING
5	705137	2	FW .391 X 1.250 X .060 ZNYC
6	056077	2	CS .250-20 X 1.00 HX G5
7	025403	4	FW .281 X .625 X .062 ZNYC
8	036236	8	CS .312-18 X 1.00 HX G5
9	079210	4	FW .344 X 1.00 X .06 ZNYC
10	108169	1	OUTER BLOWER HOUSING BRACKET
11	034272	4	NT .312-18 HX G5 ZNYC
12	768523	8	FW .343 X .687 X .051/.080 HD
13	760140	8	RIVET .187 X .375 X .375 H
14	024927	6	NT .250-20 HX GR.5 ZNYC
15	108167	1	INNER BEARING PLATE
16	108165	1	IMPELLER SHAFT
17	601239	1	IMPELLER
18	322537	1	KEY .187 SQ X 1.50 LONG
19	601073	1	IMPELLER SHAFT SPACER
20	392217	1	KEY .187 SQ X .90 LONG
21	601070	1	IMPELLER SHAFT PULLEY
22	016626	1	CS .625-11 X 1.00 HX ZNYC
23	028118	4	FW .625 X 1.00 X .134 ZNYC
24	601065	1	INSIDE IDLER PULLEY
25	108187	1	CLEVIS
26	601076	1	COMPRESSION SPRING, 1 X 4.25
27	108191	1	GUIDE ROD
28	067918	2	NT .500-13 HX G8 ZNYC
29	016972	1	NT .625-11 HX G5 ZNYC
30	600296	1	DECK IDLER SPACER
31	791566	1	IDLER PULLEY 3.25"OD X .6
32	025015	1	CS .625-11 X 2.50 HX G5
33	108193	1	BLOWER PLATE
34	007567	4	FW .208 X .59 X .051 ZN
35	109152	1	RETAINER
36	108168	1	BLOWER HOUSING STIFFNER
37	108185	1	IDLER MOUNT BRACKET
38	108892	1	BLOWER LINER
39	794784	4	CB .250-20 X .75 FUL ZN
40	768515	4	FW .281 X .625 X .051/.080 HD

---

### **NOTES:**

1. Included in 928408.

## **Catcher Assembly**



---

## **Catcher Assembly**

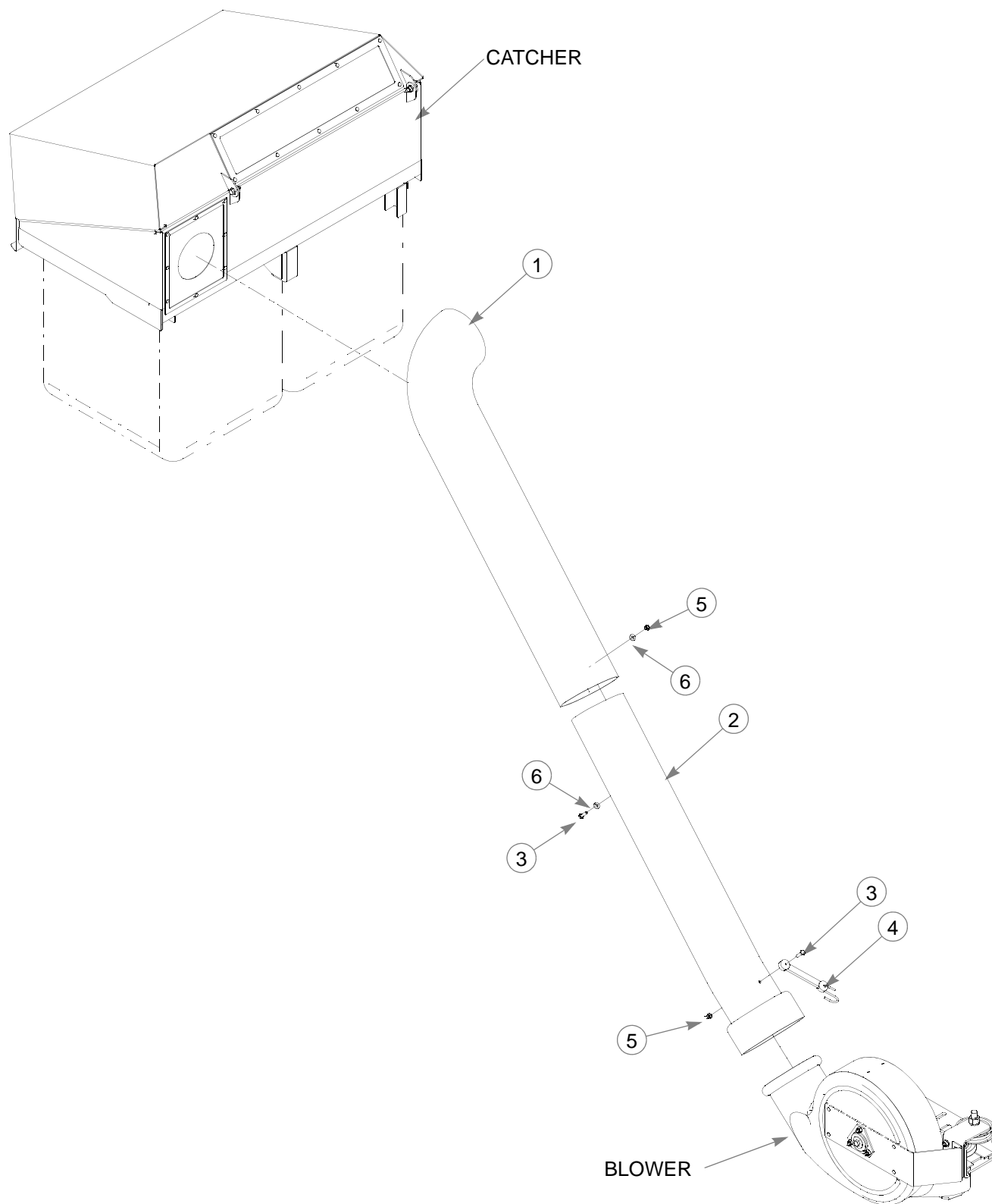
INDEX NO.	PART NO.	QTY.	DESCRIPTION
1	601236	2	CATCHER BAG
2	601223	1	LATCH PIN
3	601224	1	LATCH LANYARD
4	108733	1	HOOD ASSEMBLY
5	034272	2	NT .312-18 HX G5 ZNYC
6	768523	6	FW .343 X .687 X .051/.080 HD
7	036236	2	CS .312-18 X 1.00 HX G5
8	108741	1	SIGHT WINDOW
9	760140	18	RIVET .187 X .375 X .375 H
10	108742	1	SIGHT WINDOW RETAINER
11	713198	6.3 FT	SEAL 3/8 X 3/4
12	601241	1	GAS SPRING, HOOD LIFT
13	058776	2	NT .312-18 HXZY NL
14	108730	1	FRAME
15	108712	1	INLET GASKET
16	108713	1	INLET FLANGE

---

### **NOTES:**

1. Included in 928408.
2. Includes Items 8 (Sight Window) and 10 (Sight Window Retainer).

# **Chute Assembly**





---

## **Chute Assembly**

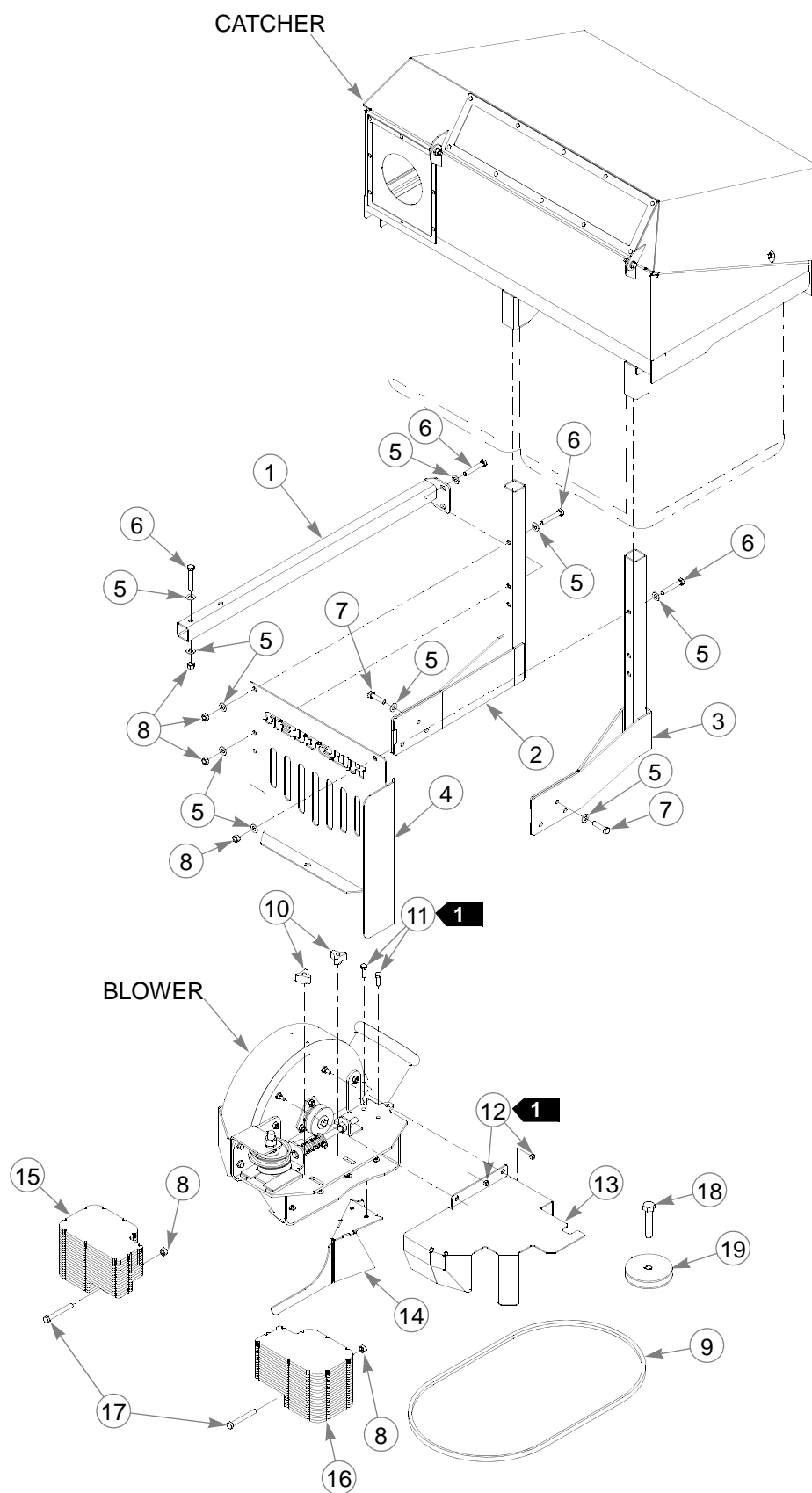
INDEX NO.	PART NO.	QTY.	DESCRIPTION
1	601228	1	UPPER TRANSITION TUBE
2	601229	1	LOWER TRANSITION TUBE
3	056077	2	CS .250-20 X 1.00 HX G5
4	601230	1	BUNGEE STRAP LATCH
5	068551	2	NT .250-20 HXZY NL
6	768515	2	FW .281 X .625 X .051/.080 HD

---

### **NOTES:**

1. Included in 928408.

# Mini Z/Super Duty FasTrak, 36/42 Adapter (108629)



---

## **Mini Z/Super Duty FasTrak, 36/42 Adapter (108629)**

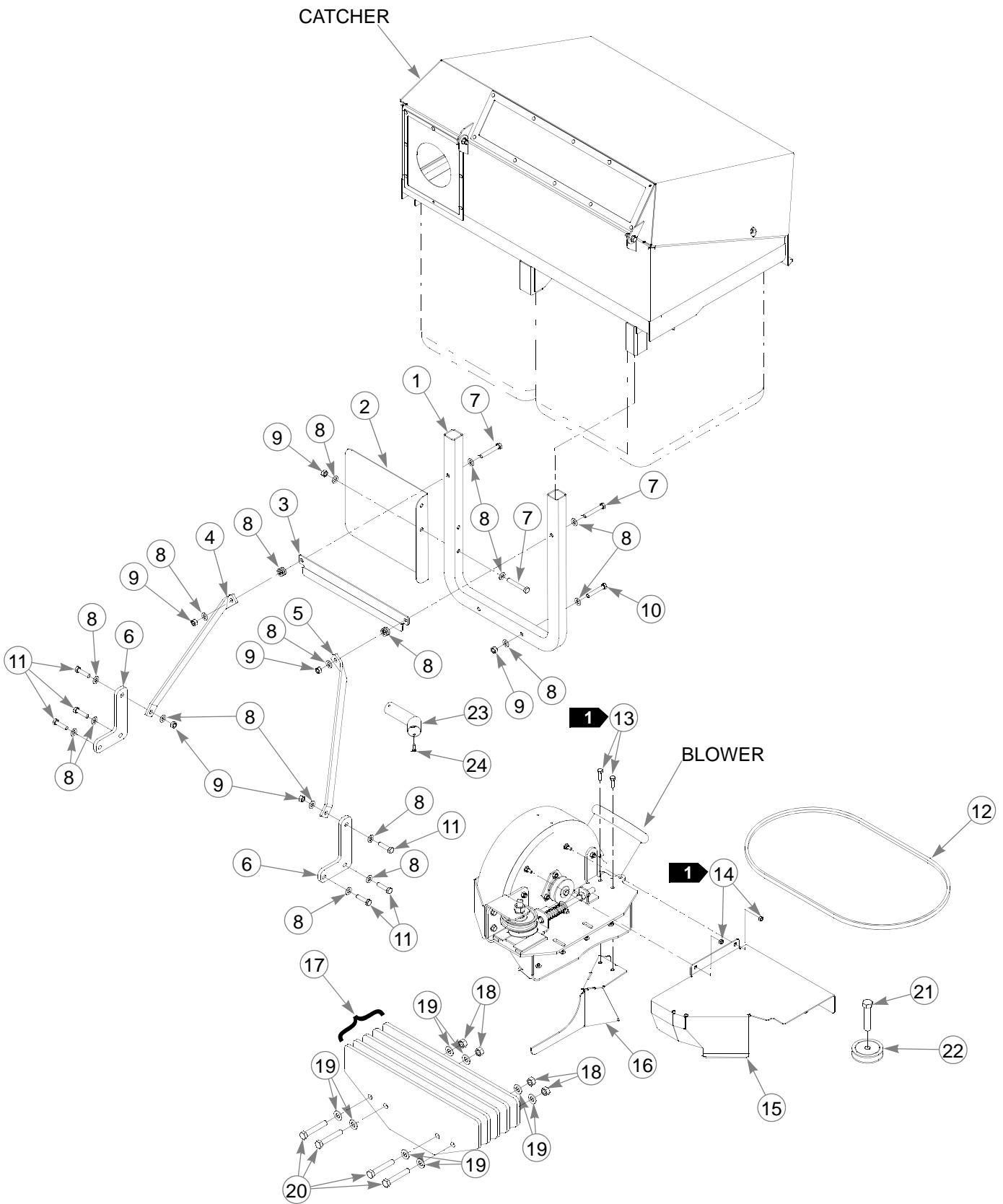
INDEX NO.	PART NO.	QTY.	DESCRIPTION
1	109099	1	SUPPORT TUBE
2	109097	1	RH MOUNT
3	109098	1	LH MOUNT
4	109089	1	HEAT SHIELD
5	767954	20	FW .406 X .812 X .060 SAE
6	056036	7	CS .375-16 X 2.250 HX G5
7	080655	6	CS .375-16 X 1.50 HX G5
8	054502	9	NT .375-16 HX GRD 5 ZNYC
9	601233	1	BELT, 4L-SEC 61.79 EL
10	601237	2	PLASTIC KNOB
11	036236	2	CS .312-18 X 1.00 HX G5
12	024927	2	NT .250-20 HX GR.5 ZNYC
13	108022	1	BELT COVER
14	109101	1	BLOWER BAFFLE
15	108489	1	WEIGHT
16	108488	1	WEIGHT
17	016444	2	CS .375-16 X 3.0 HX G5 ZN
18	783738	1	CS .625-11 X 3.00 FULL HX
19	601225	1	DRIVE PULLEY

---

### **NOTES:**

1. Supplied with 928408.

**FasTrak 48 Adapter (108630)**



---

## **FasTrak 48 Adapter (108630)**

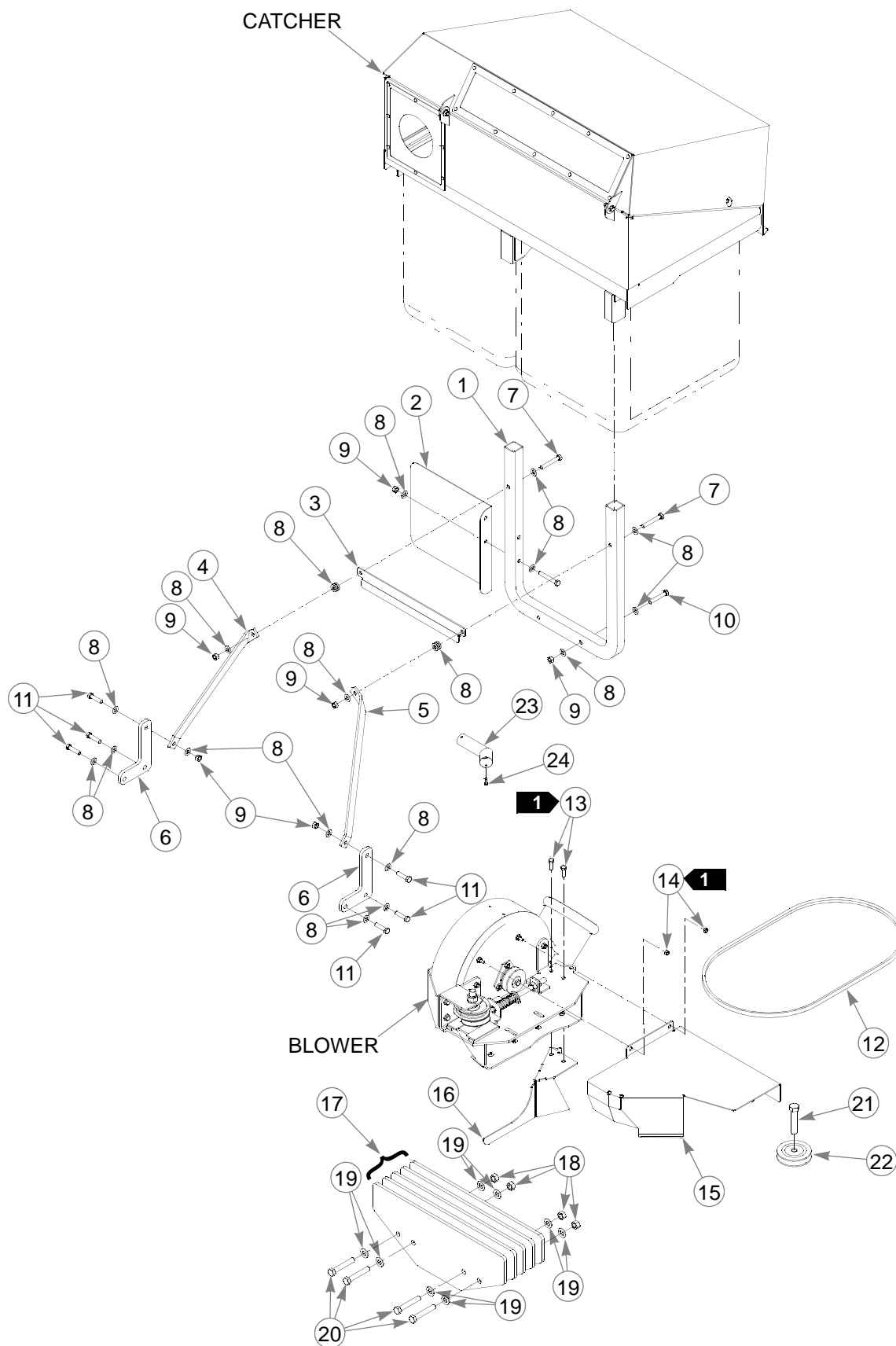
INDEX NO.	PART NO.	QTY.	DESCRIPTION
1	108171	1	FRAME MOUNTING TUBE
2	108818	1	HEAT SHIELD
3	108222	1	MOUNTING BRACKET
4	108220	1	CATCHER BRACE
5	108219	1	CATCHER BRACE
6	107924	2	CATCHER BRACE BASE
7	016428	4	CS .375-16 X 2.50 HX GR5
8	767954	26	FW .406 X .812 X .060 SAE
9	054502	2	NT .375-16 HX GRD 5 ZNYC
10	056036	2	CS .375-16 X 2.250 HX G5
11	080655	6	CS .375-16 X 1.50 HX G5
12	601231	1	BELT, 4L-SEC 54.79 EL
13	036236	2	CS .312-18 X 1.00 HX G5
14	024927	2	NT .250-20 HX GR.5 ZNYC
15	108718	1	BELT COVER
16	109102	1	BLOWER BAFFLE
17	104489	5	FASTRAK WEIGHT PLATE
18	008193	4	NT .500-13 HX G5 ZNYC
19	767962	8	FW .531 X 1.063 X .090 SAE
20	016568	4	CS .500-13 X 3.00 HX ZN
21	783738	1	CS .625-11 X 3.00 FULL HX
22	601226	1	DRIVE PULLEY
23	378760	1	TAIL PIPE EXTENSION
24	769299	1	SC #10 X .750 PHILLIPS TH

---

### **NOTES:**

1. Supplied with 928408.

### FasTrak 54 Adapter (108631)



---

## **FasTrak 54 Adapter (108631))**

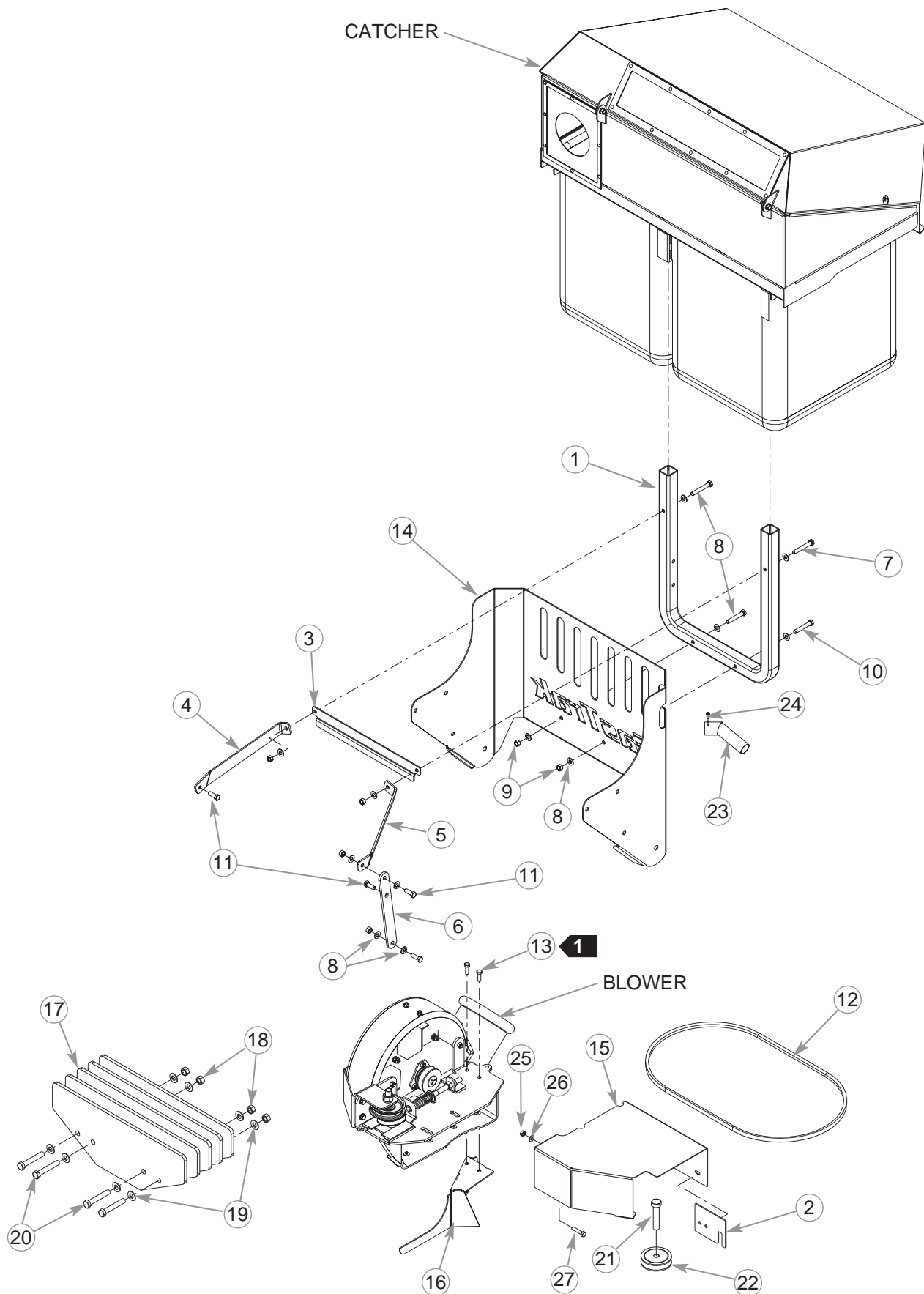
INDEX NO.	PART NO.	QTY.	DESCRIPTION
1	108171	1	FRAME MOUNTING TUBE
2	108818	1	HEAT SHIELD
3	108222	1	MOUNTING BRACKET
4	108220	1	CATCHER BRACE
5	108219	1	CATCHER BRACE
6	107924	2	CATCHER BRACE BASE
7	016428	4	CS .375-16 X 2.50 HX GR5
8	767954	26	FW .406 X .812 X .060 SAE
9	054502	8	NT .375-16 HX GRD 5 ZNYC
10	056036	2	CS .375-16 X 2.250 HX G5
11	080655	6	CS .375-16 X 1.50 HX G5
12	601232	1	BELT, 4L-SEC 57.79 EL
13	036236	2	CS .312-18 X 1.00 HX G5
14	024927	2	NT .250-20 HX GR.5 ZNYC
15	108717	1	BELT COVER
16	109103	1	BAFFLE
17	104489	5	FASTRAK WEIGHT PLATE
18	008193	4	NT .500-13 HX G5 ZNYC
19	767962	8	FW .531 X 1.063 X .090 SAE
20	016568	4	CS .500-13 X 3.00 HX ZN
21	783738	1	CS .625-11 X 3.00 FULL HX
22	601227	1	DRIVE PULLEY
23	378760	1	TAIL PIPE EXTENSION
24	769299	1	SC #10 X .750 PHILLIPS TH

---

### **NOTES:**

2. Supplied with 928408.

# **FasTrak 44 Adapter (109516)**





---

## **FasTrak 44 Adapter (109516)**

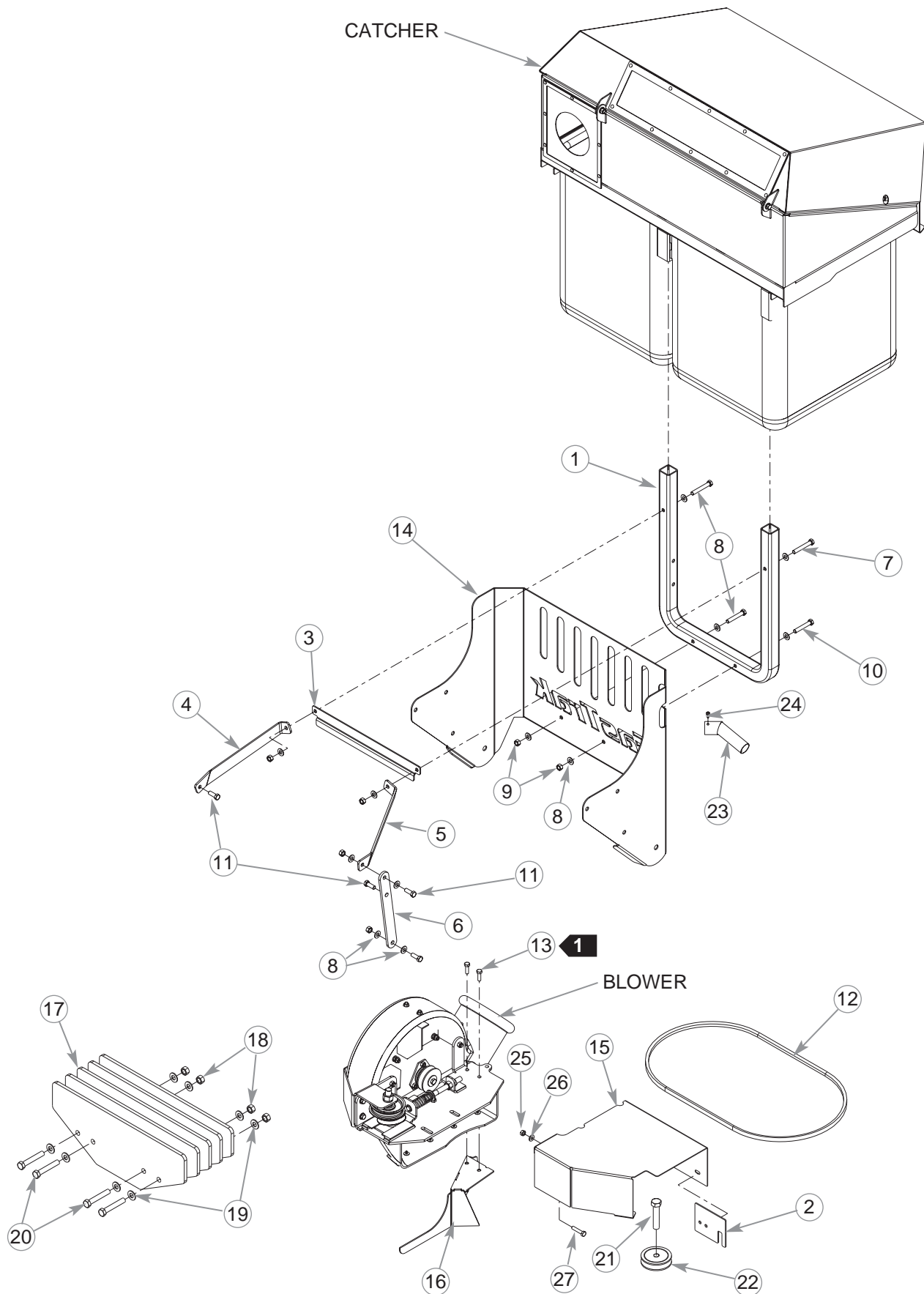
INDEX NO.	PART NO.	QTY.	DESCRIPTION
1	108171	1	FRAME MOUNTING TUBE
2	109522	1	DECK STOP PLATE
3	108222	1	MOUNTING BRACKET
4	109470	1	CATCHER BRACE, RH
5	109469	1	CATCHER BRACE, LH
6	109471	1	EXTENSION BRACKET
7	016428	2	CS .375-16 X 2.50 HX GR5
8	767954	12	FW .406 X .812 X .060 SAE
9	054502	6	NT .375-16 HX GRD 5 ZNYC
10	056036	2	CS .375-16 X 2.250 HX G5
11	036244	4	CS .375-16 X 1.00 HX G5
12	601659	1	BELT
13	036236	2	CS .312-18 X 1.00 HX G5
14	109468	1	REAR ENGINE GUARD
15	109598	1	BELT COVER
16	109265	1	BLOWER BAFFLE
17	104489	5	FASTRAK WEIGHT PLATE
18	008193	4	NT .500-13 HX G5 ZNYC
19	767962	8	FW .531 X 1.063 X .090 SAE
20	016568	4	CS .500-13 X 3.00 HX ZN
21	783738	1	CS .625-11 X 3.00 FULL HX
22	601226	1	DRIVE PULLEY
23	378760	1	TAIL PIPE EXTENSION
24	769299	1	SC #10 X .750 PHILLIPS TH
25	034272	1	NT .312-18 HX G5 ZN
26	768523	1	F; .343 X .687 X .051/.080
27	052837	1	CS .312-18 X 1.50 HX G5 ZN

---

### **NOTES:**

1. Supplied with 928408.

# **FasTrak 52 Adapter (109517)**



---

## **FasTrak 52 Adapter (109517)**

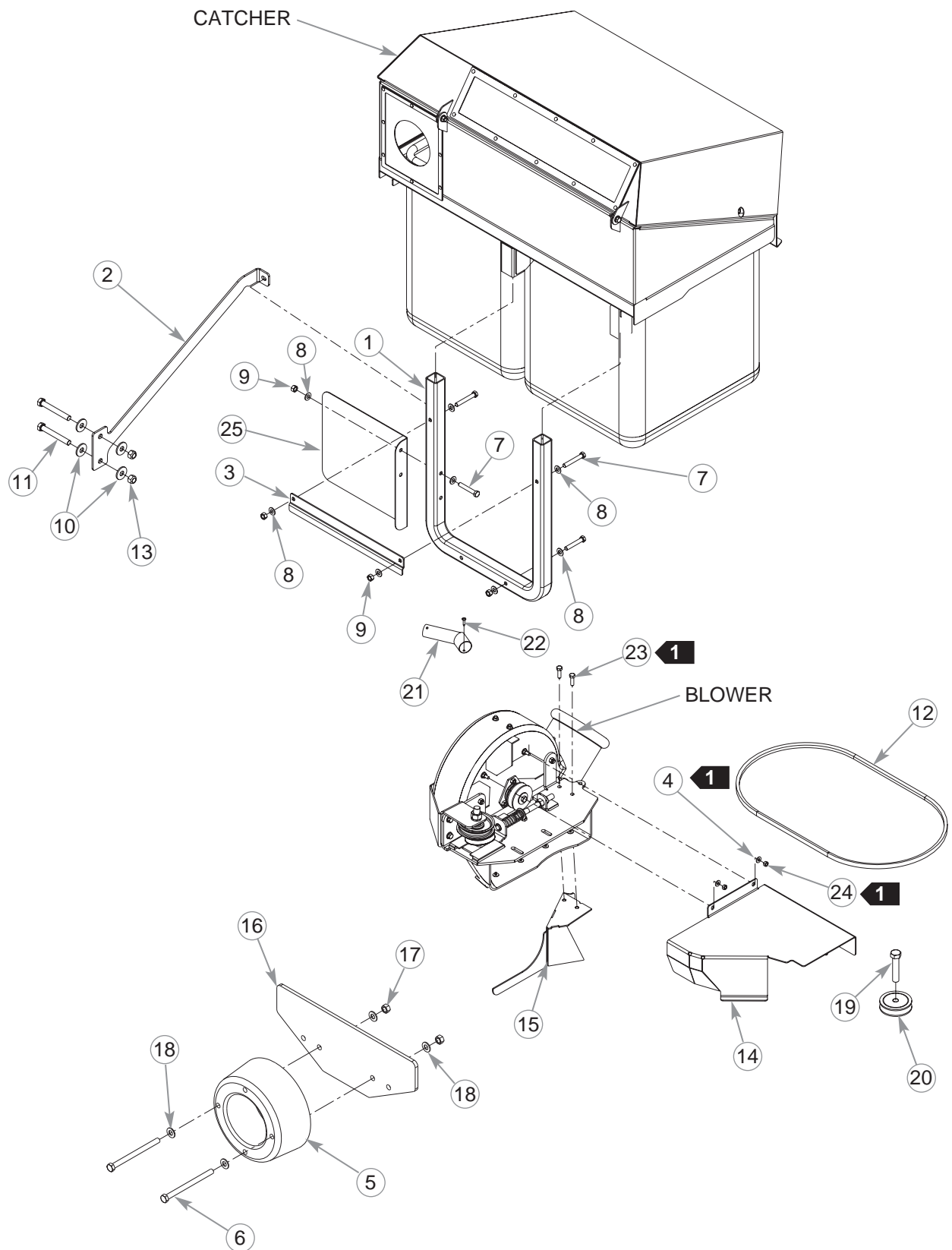
INDEX NO.	PART NO.	QTY.	DESCRIPTION
1	108171	1	FRAME MOUNTING TUBE
2	109522	1	DECK STOP PLATE
3	108222	1	MOUNTING BRACKET
4	109470	1	CATCHER BRACE, RH
5	109469	1	CATCHER BRACE, LH
6	109471	1	EXTENSION BRACKET
7	016428	2	CS .375-16 X 2.50 HX GR5
8	767954	12	FW .406 X .812 X .060 SAE
9	054502	6	NT .375-16 HX GRD 5 ZNYC
10	056036	2	CS .375-16 X 2.250 HX G5
11	036244	4	CS .375-16 X 1.00 HX G5
12	601231	1	BELT
13	036236	2	CS .312-18 X 1.00 HX G5
14	109468	1	REAR ENGINE GUARD
15	109521	1	BELT COVER
16	109268	1	BLOWER BAFFLE
17	104489	5	FASTRAK WEIGHT PLATE
18	008193	4	NT .500-13 HX G5 ZNYC
19	767962	8	FW .531 X 1.063 X .090 SAE
20	016568	4	CS .500-13 X 3.00 HX ZN
21	783738	1	CS .625-11 X 3.00 FULL HX
22	601227	1	DRIVE PULLEY
23	378760	1	TAIL PIPE EXTENSION
24	769299	1	SC #10 X .750 PHILLIPS TH
25	034272	1	NT .312-18 HX G5 ZN
26	768523	1	F; .343 X .687 X .051/.080
27	052837	1	CS .312-18 X 1.50 HX G5 ZN

---

### **NOTES:**

1. Supplied with 928408.

# **FasTrak Super Duty 60" Adapter (110159)**



---

## ***FasTrak Super Duty 60" Adapter (110159)***

INDEX NO.	PART NO.	QTY.	DESCRIPTION
1	108171	1	FRAME MOUNTING TUBE
2	019612	1	BUMPER SUPPORT
3	109641	1	MOUNTING BRACKET
4	025403	2	FW .281 X .625 X .062 ZN
5	789214	1	WEIGHT
6	042630	2	CS .500-13 X 6.50 HX 65 ZN
7	056036	6	CS .375-16 X 2.250 HX GR5
8	767954	12	FW .406 X .812 X .060 SAE
9	054502	6	NT .375-16 HX GRD 5 ZNYC
10	712976	4	FW .531 1.375 X .125 ZN/711
11	068023	2	CS .500-13 X 3.75 HX GR8 ZN
12	601667	1	BELT
13	023317	2	NT .500-13 UNT LK G5 ZN
14	109995	1	BELT COVER
15	109998	1	BLOWER BAFFLE
16	104489	1	FASTRAK WEIGHT PLATE
17	008193	2	NT .500-13 HX G5 ZNYC
18	767962	4	FW .531 X 1.063 X .090 SAE
19	783738	1	CS .625-11 X 3.00 FULL HX
20	601227	1	DRIVE PULLEY
21	378760	1	TAIL PIPE EXTENSION
22	769299	1	SC #10 X .750 PHILLIPS TH
23	036236	2	CS .312-18 X 1.00 HX G5
24	024927	2	NT .250-20 HX G5 ZN
25	108818	1	HEAT SHIELD

---

### **NOTES:**

1. Supplied with 928408.



# INDEX

	PAGE
Blower drive belt.....	5-1
Blower housing and transfer tube .....	5-1
Deck adapter kits.....	3-1
Final connection .....	3-12
Mower deck preparation .....	3-8
Parts list.....	3-1
Parts and service.....	1-1
Safety precautions .....	2-1

	PAGE
Storage.....	6-1
To the new owner.....	1-1
Tractor preparation.....	3-9
Unloading .....	4-1
Using this manual.....	1-1
Vacuum pickup and collection.....	4-1
Warranty registration .....	1-1